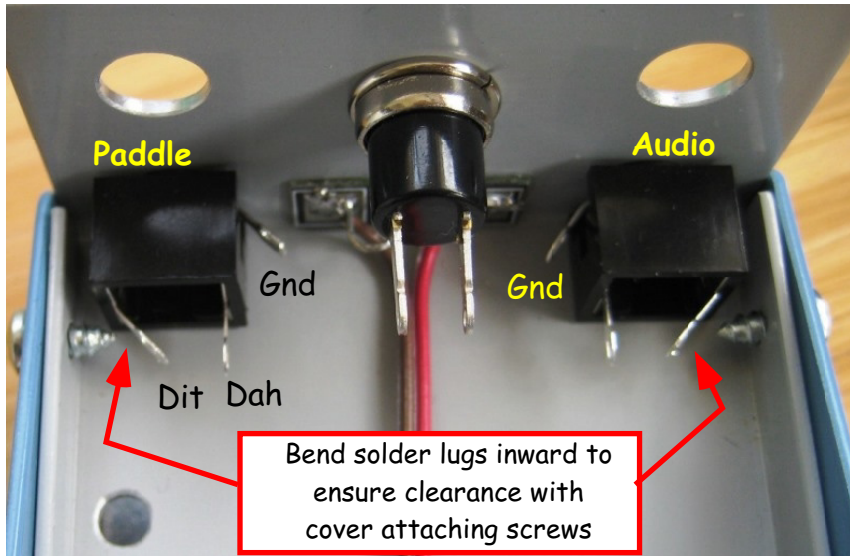
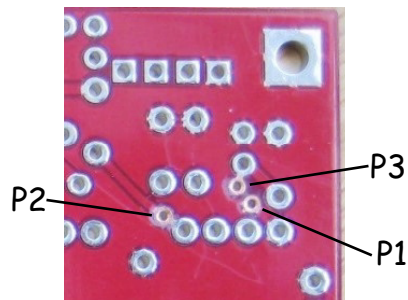


# Rockmite ][ v3 CR-425 Enclosure Assembly Notes

W5USJ Drawing 27 Mar 2014



## Volume Pot Connections

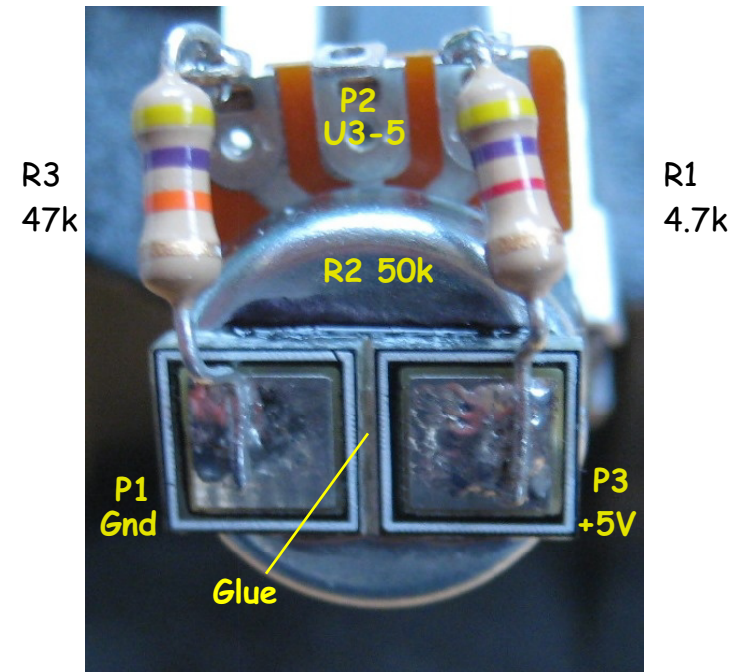


Carefully scrape the soldermask from these three pads

## Keyer speed pot assembly preparation

First, clean the pot surface to remove any dirt or grime. Also scuff up the back side of the MePads.

Then put a tiny drop of super glue in the center of the pot. Carefully align the MePads as shown below. Let the glue dry for several minutes



P1, P2 and P3 are the connection pads on the RM][ v3 PCB