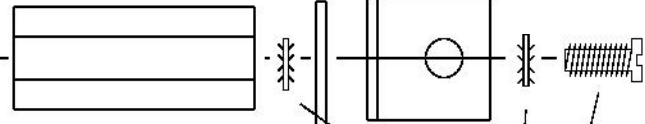


LEFT SIDE HARDWARE  
SAME AS RIGHT SIDE

# TOP VIEW



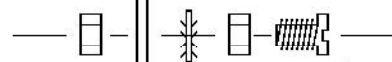
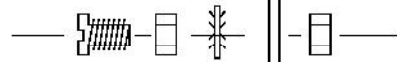
6-32 x 3/8" PAN HEAD MACHINE SCREW (BOLT) - 2 PLACES

#6 INT. TOOTH LOCK WASHER - 4 PLACES

RIGHT ANGLE BRACKET - 2 PLACES

PCB STOCK PADDLE ARM PIECES - 2 PLACES

6-32 X 5/8" THREADED NYLON STANDOFF



6-32 x 3/8" PAN HEAD MACHINE SCREW (BOLT) - 2 PLACES

6-32 NUT - 4 PLACES

#6 INT. TOOTH LOCK WASHER - 2 PLACES

# SIDE VIEW

#6 INTERNAL TOOTH LOCK WASHER - 2 PLACES

6-32 NUT - 2 PLACES

RIGHT ANGLE BRACKET - 2 PLACES

#6 FLAT WASHER  
1 OR 2 HIGH  
AS REQ'D  
2 PLACES

6-32 X 3/4" THREADED ALUMINUM STANDOFF

#6 INTERNAL TOOTH LOCK WASHER

6-32 x 3/8" PAN HEAD MACHINE SCREW  
(BOLT) - 3 PLACES

### Drill tape data

Tool Code	Hole Size	Sym bol	Hole Count

Board type: FR4  
Board thickness: .031"  
Copper weight: 2oz  
Layer count: 2

All dimensions are in inches.

Board should have RED solder mask over bare copper (SMOBC) with white silk screening on top.

View is from the top side of the board.

Co:	QRPme		
Title:	Limerick Keyer		
Board:	Mechanical Assembly	Revision:	A
Drawn:	WIREX	Size:	A
Date:	09/06/15	Sheet	1 of 1