



The Sudden Storm][Kit by QRPme

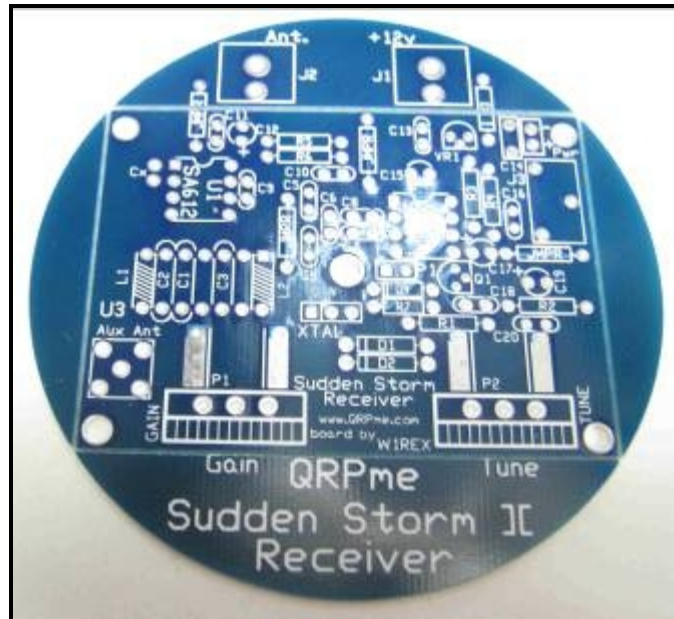
The Sudden Storm kit is a simple, easy-to-build direct conversion receiver based on a design by the Rev. George Dobbs, G3RJV, presented in his Practical Wireless column. QRPme's version of the circuit board is designed to fit on top of a tuna can creating the perfect mate for the Two Tinned Tunas kit. With no coils to wind, a minimum of parts and a step by step pictorial builder's guide, this kit is ideal for beginners and experienced builders alike.

W1REX QRPme www.QRPme.com

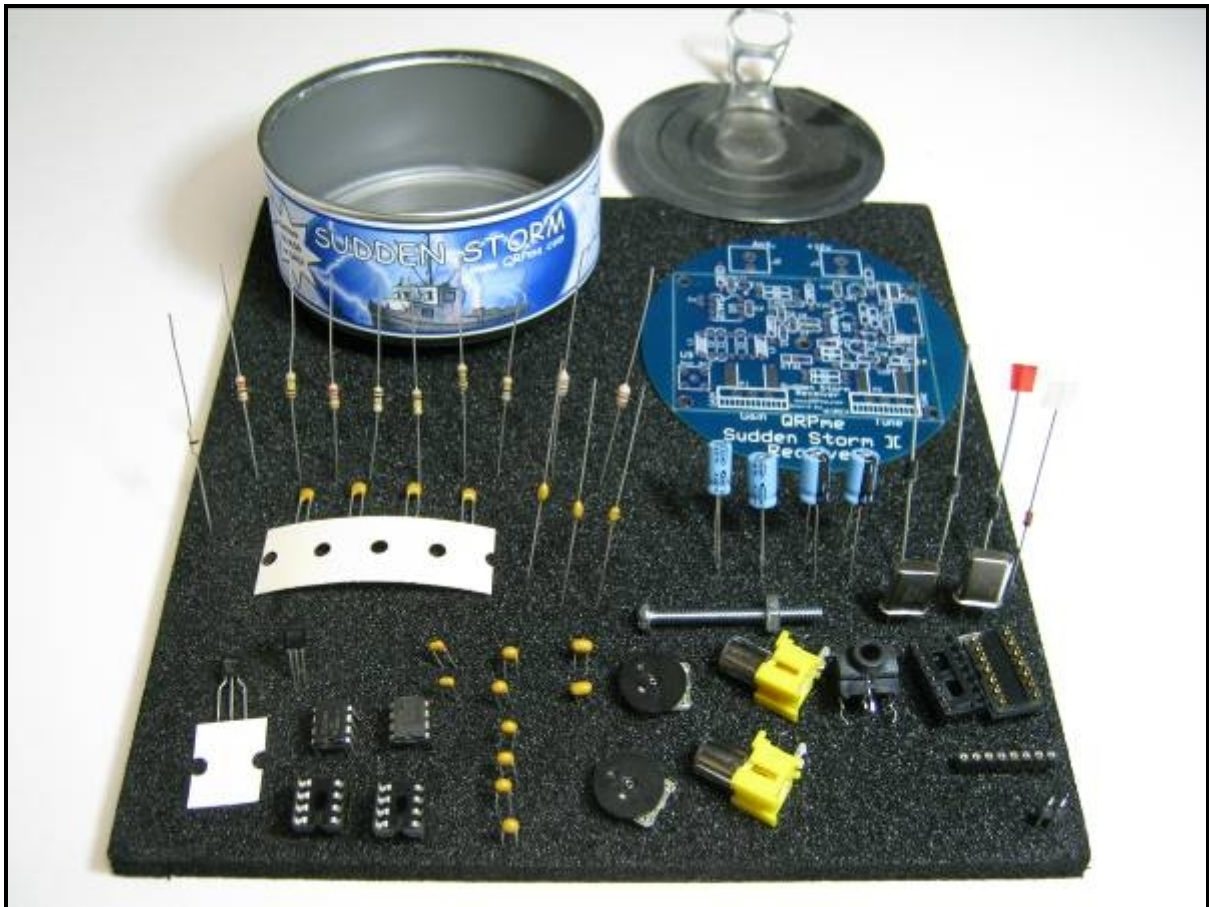
Manual Ver. 5.0



Open the can and the adventure begins...



This Builder's Guide is for the new Sudden Storm II board pictured above. Earlier versions of the Sudden Storm kit require a different Builder's Guide.



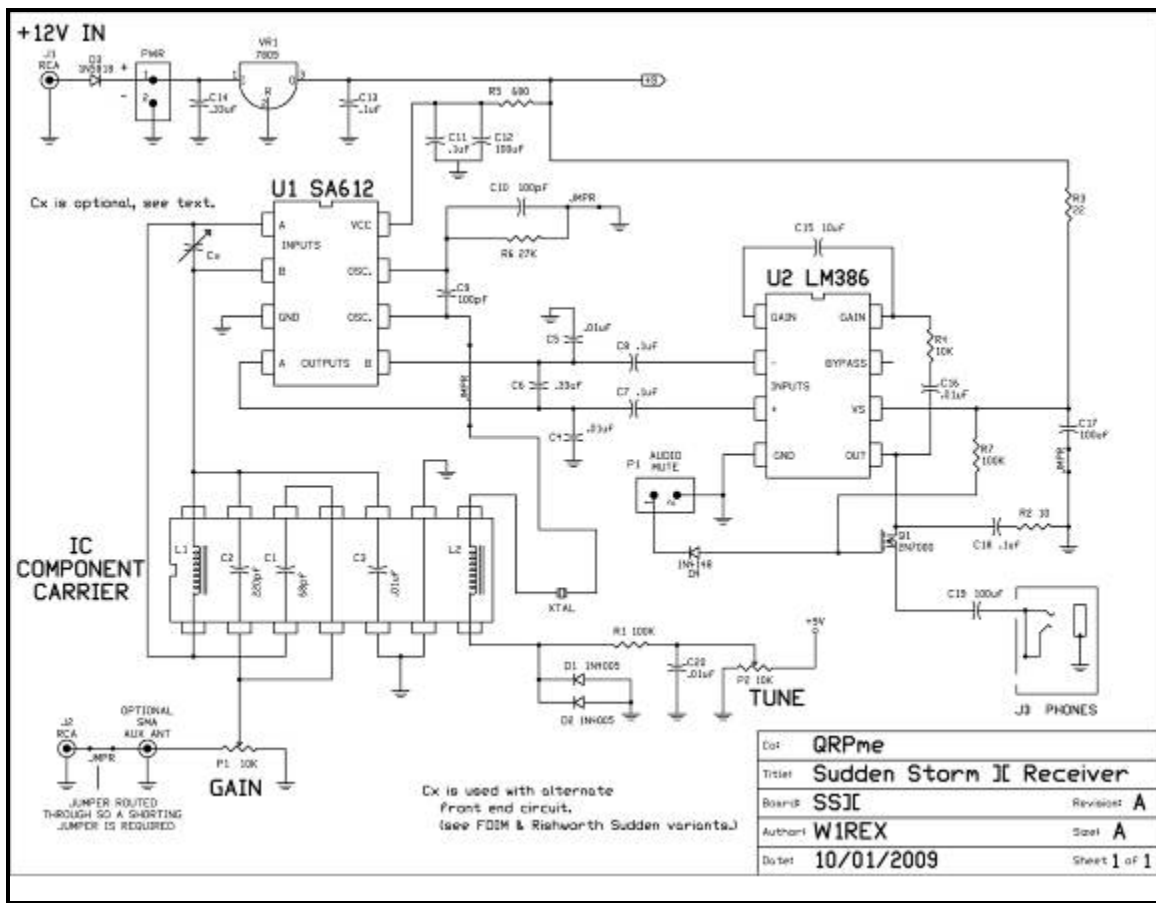
Organize the parts and take an inventory...

Sudden Storm][Parts List

R1 = 100K	(brn-blk-yel)	C1 = 68pf axial (680)	D1 = 1N4005
R2 = 10 ohms	(brn-blk-blk)	C2 = 220pf axial (221)	D2 = 1N4005
R3 = 22 ohms	(red-red-blk)	C3 = .01uf axial (104)	D3 = 1N5818
R4 = 10K	(brn-blk-org)	C4 = .01uf (104)	D4 = 1N4148
R5 = 680 ohms	(blu-gry-brn)	C5 = .01uf (103)	Q1 = 2N7000
R6 = 27K	(red-vio-org)	C6 = .33uf (334)	VR1 = LM7809ACZ
R7 = 100K	(brn-blk-yel)	C7 = .1uf (104)	U1 = 8pin DIP
JMPR = 0 ohms	(black)	C8 = .1uf (104)	socket & SA612
P1 = 10K potentiometer		C9 = 100pf (101)	U2 = 8pin DIP
P2 = 10k potentiometer		C10 = 100pf (101)	socket & LM386
L1 = 10uh	(brn-blk-blk)	C11 = .1uf (104)	P1 = 2pin .1" Molex
L2 = 10uh	(brn-blk-blk)	C12 = 100uf	J1 = RCA jack
1/8" x 1 1/2" bolt & nut		C13 = .1uf (104)	J2 = RCA jack
printed circuit board		C14 = .33uf (334)	14 pin IC carrier
tuna can		C15 = 10uf	XTAL = 7.030
		C16 = .01uf (103)	& 7.040
		C17 = 100uf	8pin SIP strip
		C18 = .1uf (104)	
		C19 = 100uf	
		C20 = .01uf (103)	

Hopefully, everything is there and you can get started!

You should review the following schematic and run through this builders guide a couple of times just to familiarize your self with the complete construction process. This guide takes a step by step approach to building the kit where all the parts are installed in order. Experienced builders usually develop their own techniques in building projects. One method is to install the parts by their profile; where the parts that hug the board closest are installed first and progressively taller parts are installed in order of height. This guide follows that method of construction soldering: resistors, capacitors, ICs, Pots and jacks according to their height above the board. The reasoning behind this logic is that it makes it easier to install successive parts.



When building up an electronic circuit board, there are several different techniques for determining the order of parts placed on the board:

center of board working towards edges

left to right for right handed builders

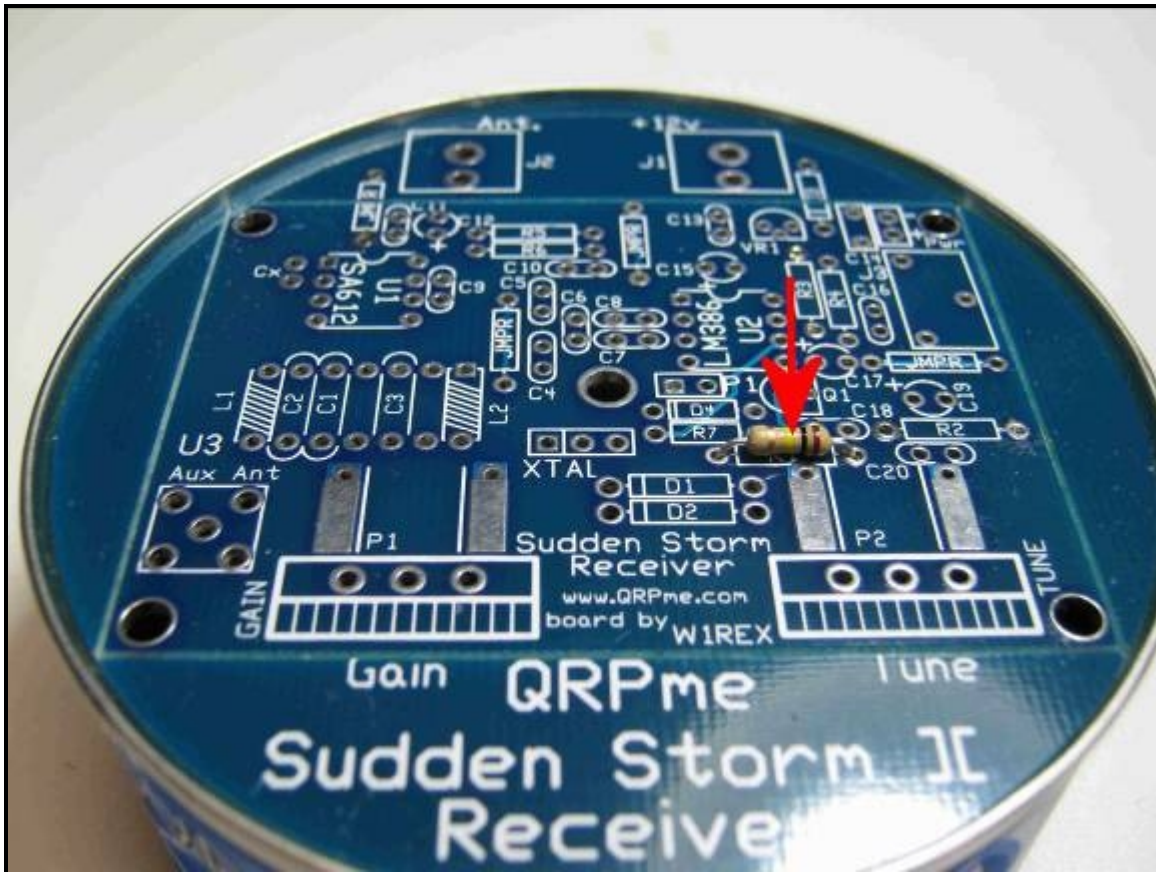
right to left for left handed builders

short to tall components

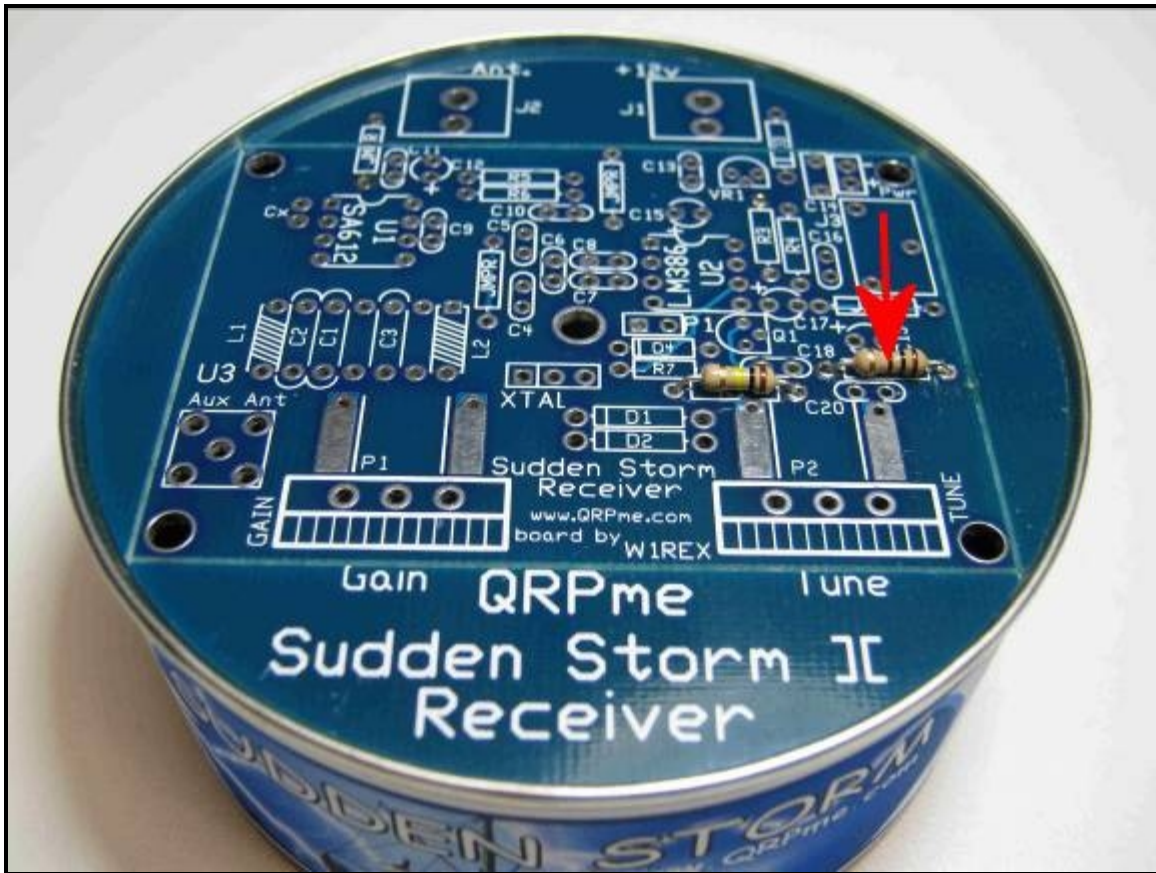
groups of like parts: resistors, capacitors, diodes etc.

Each technique has a logic to its own. This builder's guide uses a combination of groups of like parts AND shorter more close to the board parts first followed by increasingly taller and bulkier parts.

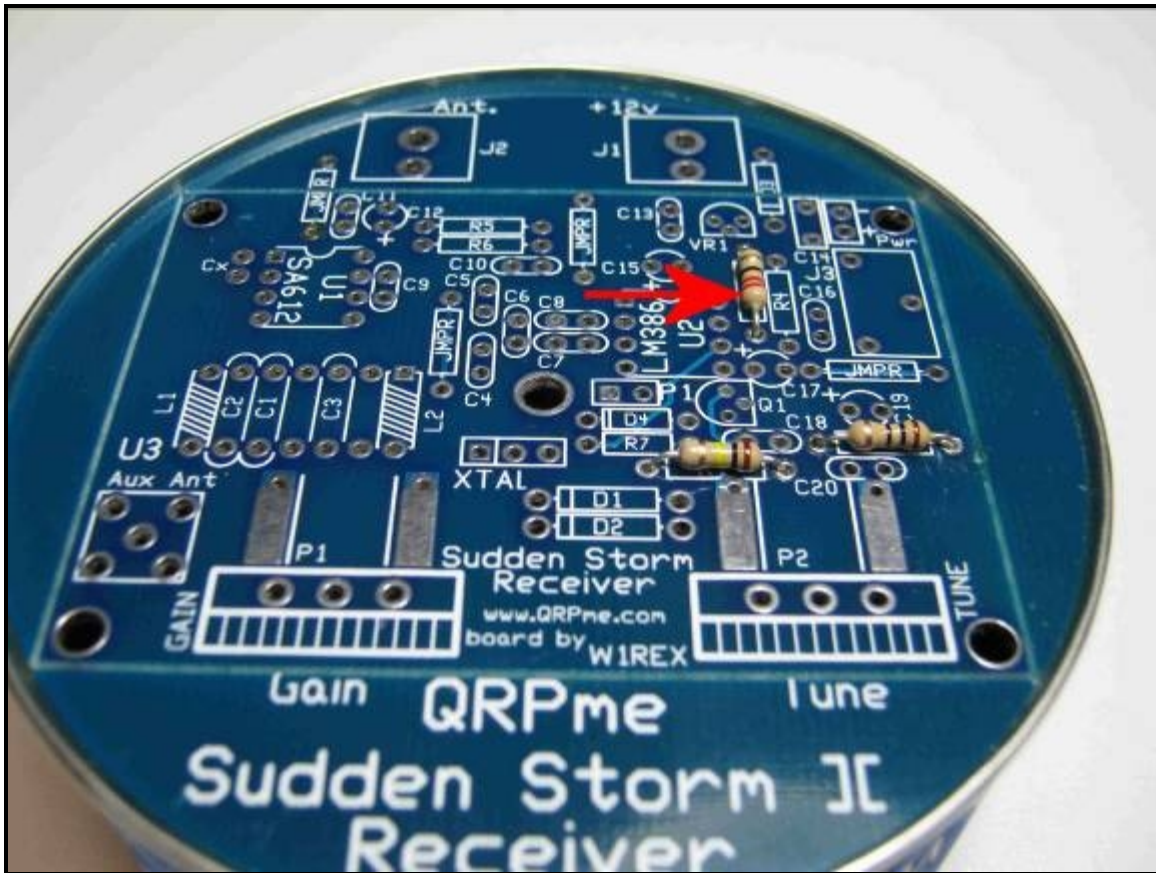
So the parts that are closest to the board are resistors and diodes. Install all the resistors first followed by the diodes.



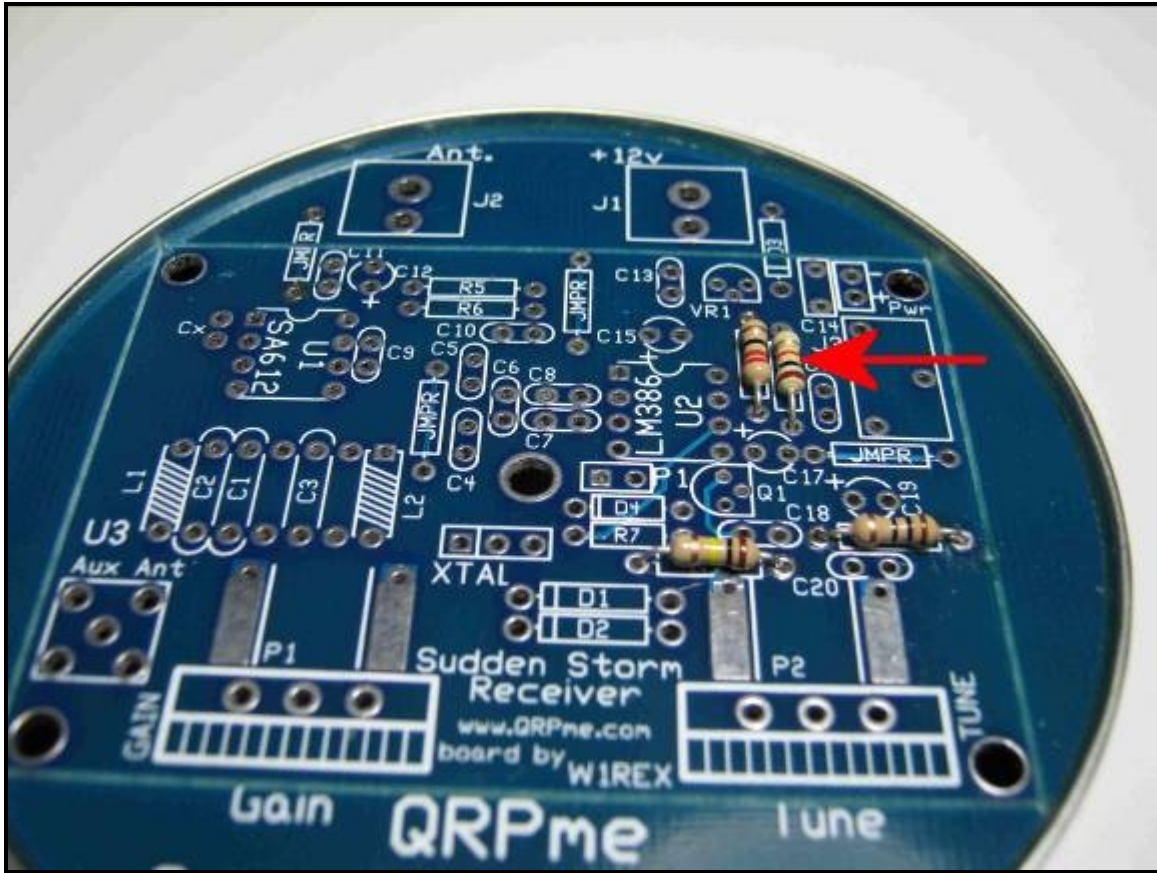
R1 = 100K (brn-blk-yel)



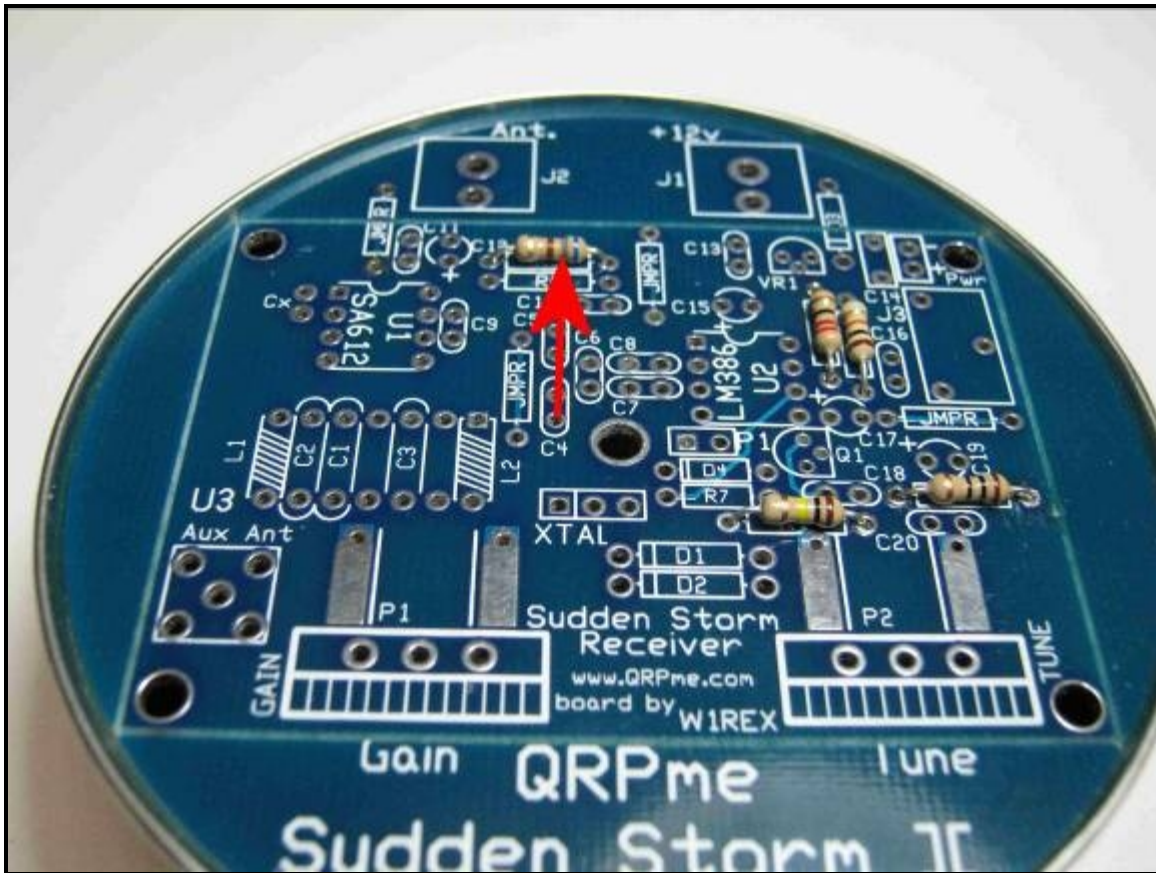
R2 = 10 ohms (brn-blk-blk)



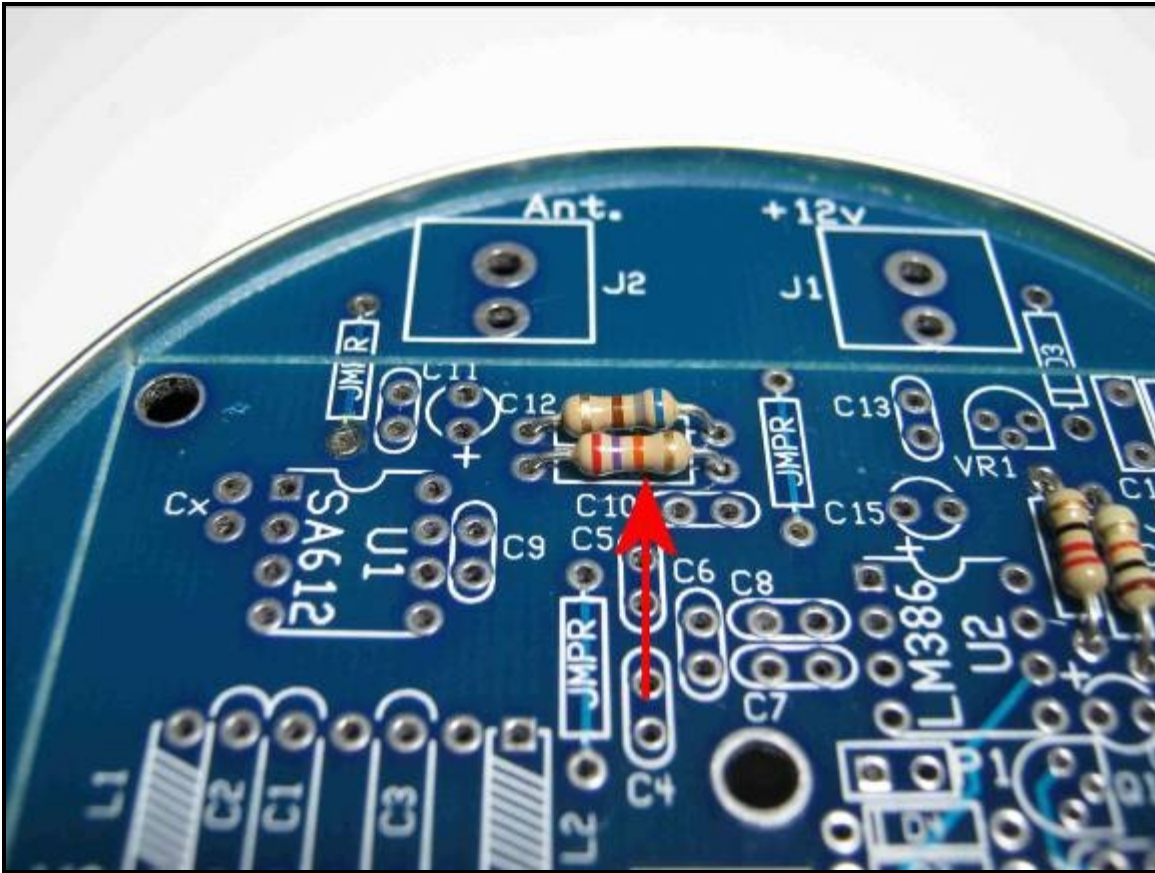
R3 = 22 ohms (red-red-blk)



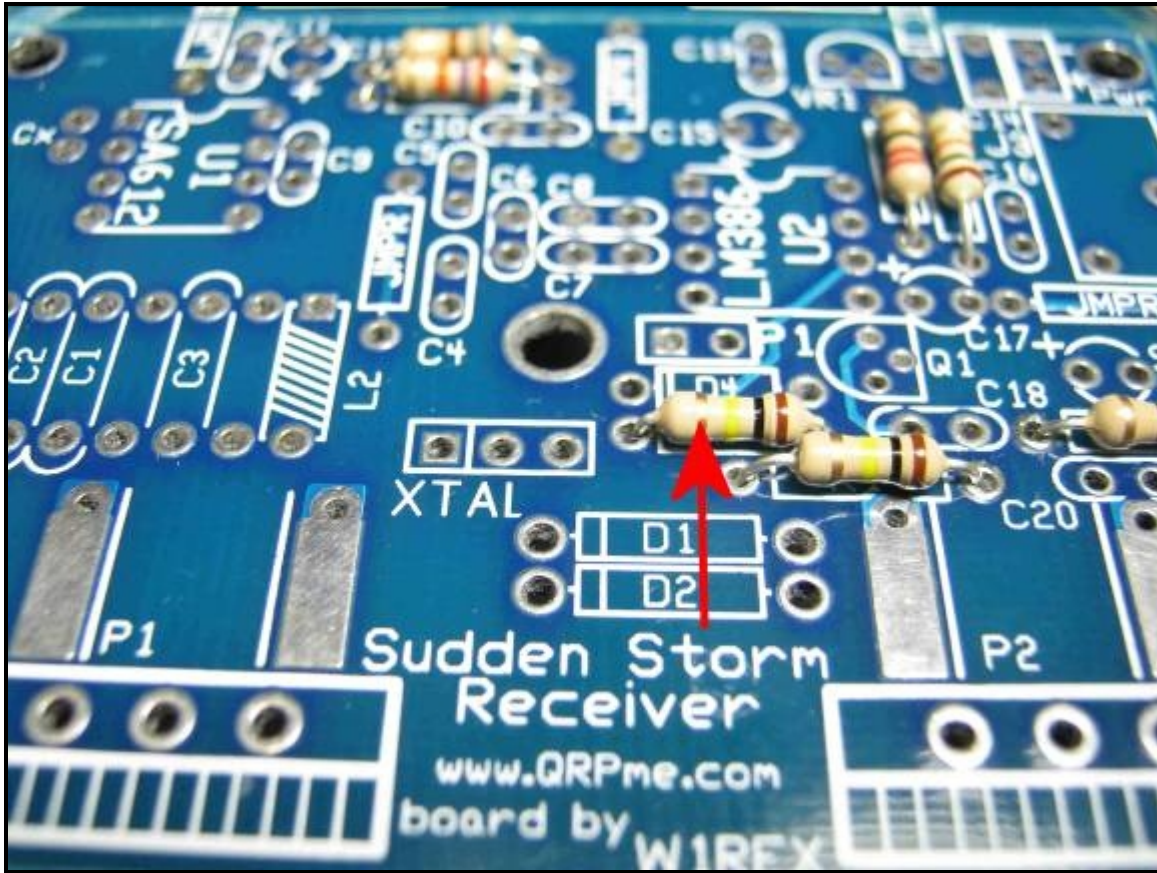
R4 = 10K (brn-blk-org)



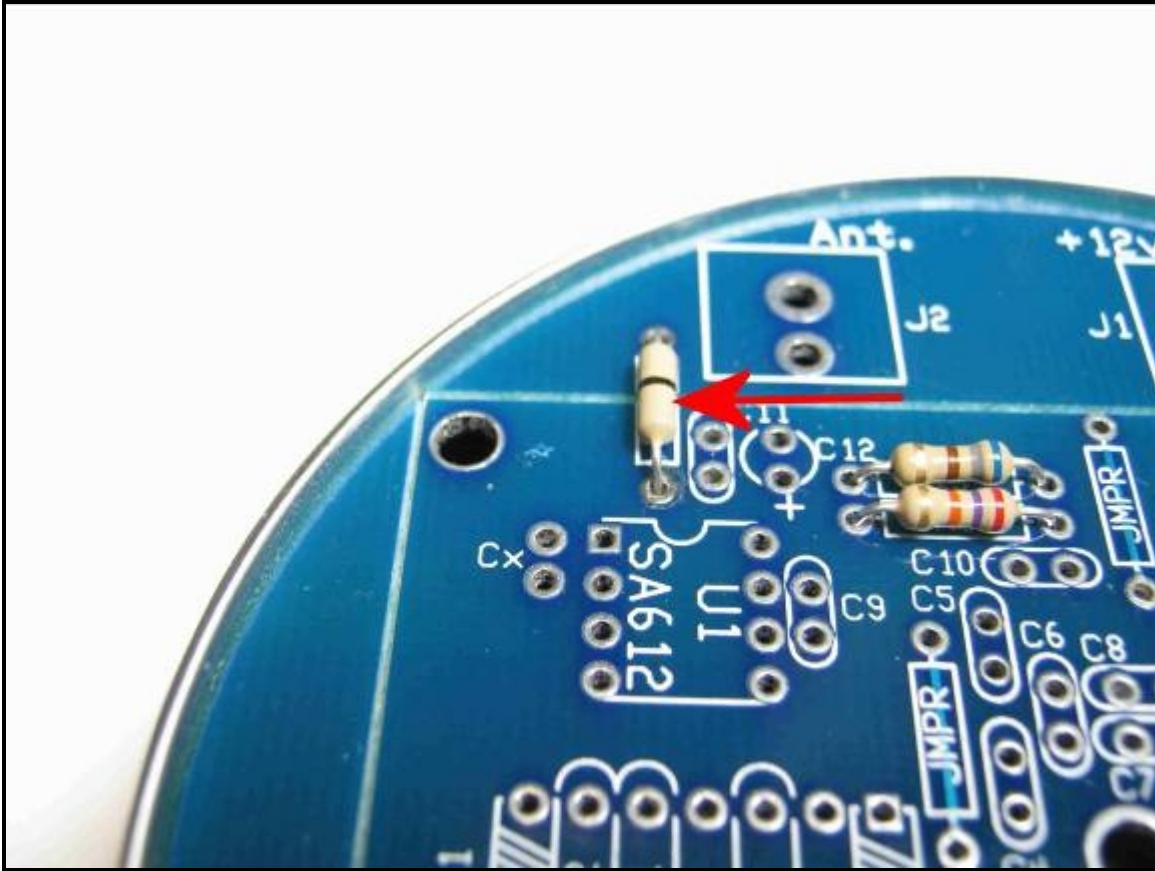
R5 = 680 ohms (blu-gry-brn)



R6 = 27K (red-vio-org)

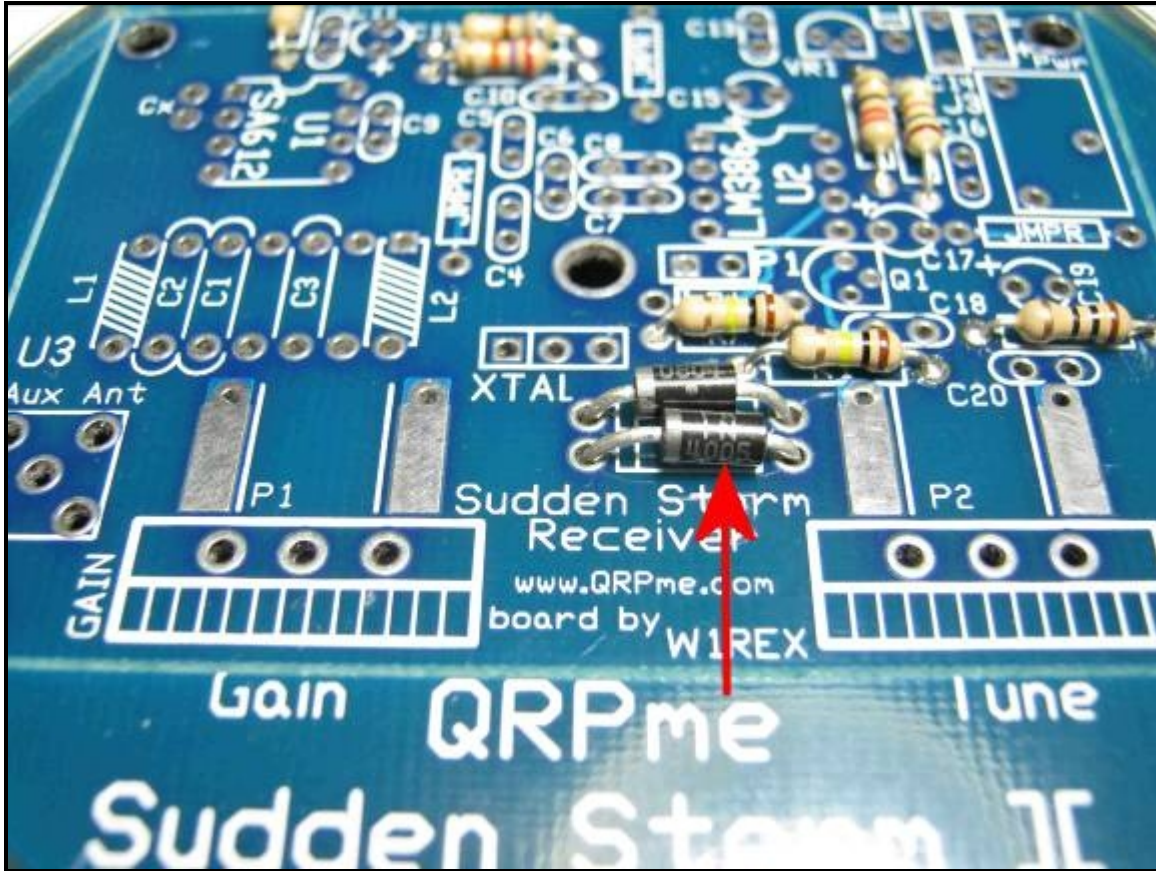


R7 = 100K (brn-blk-yel)

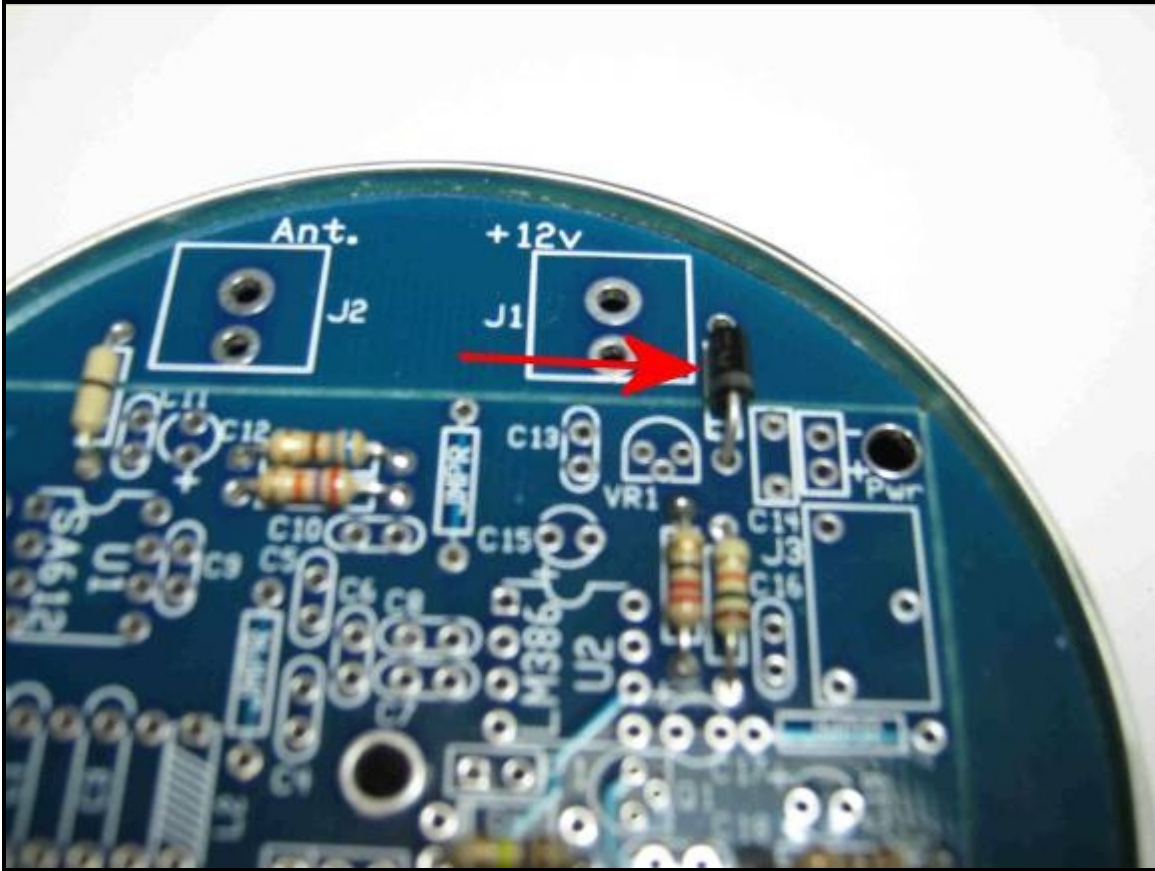


Install a 0 ohm (blk) in the upper left corner of the board.

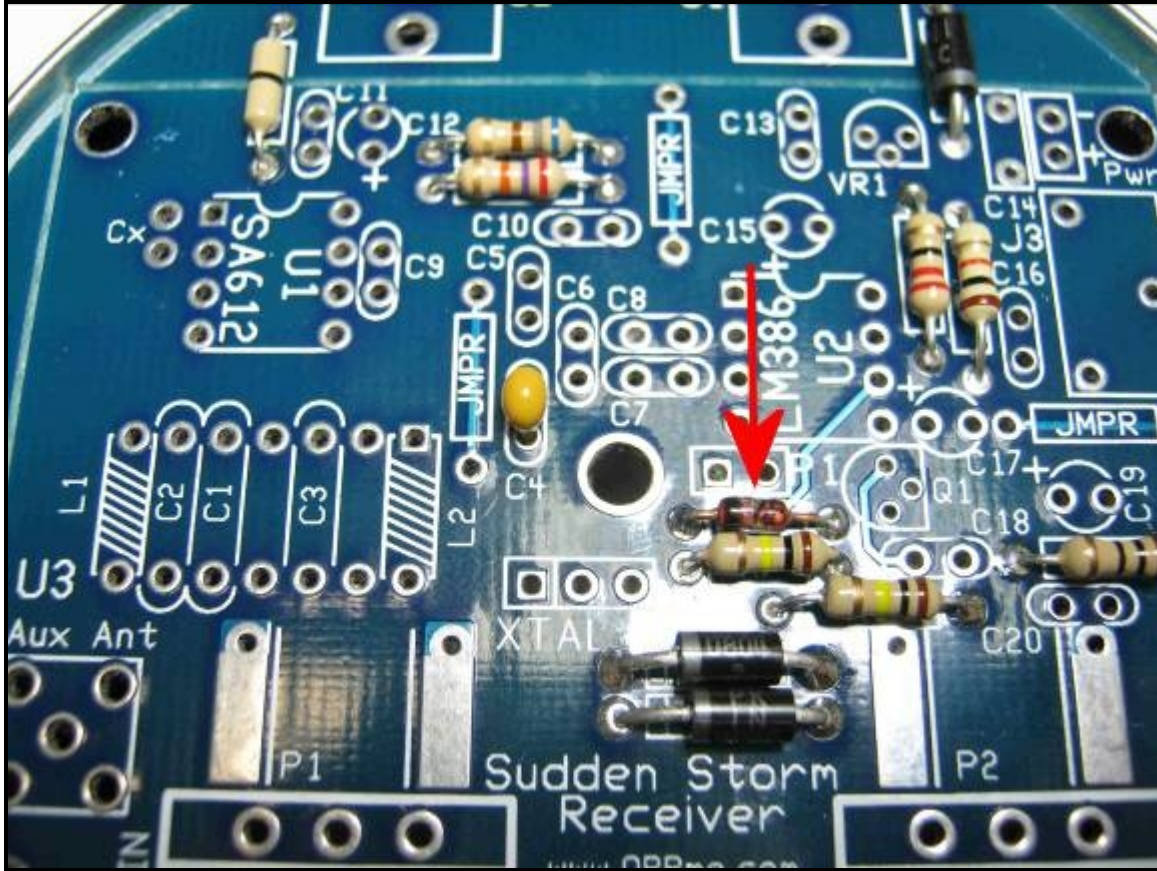
Now install the diodes....



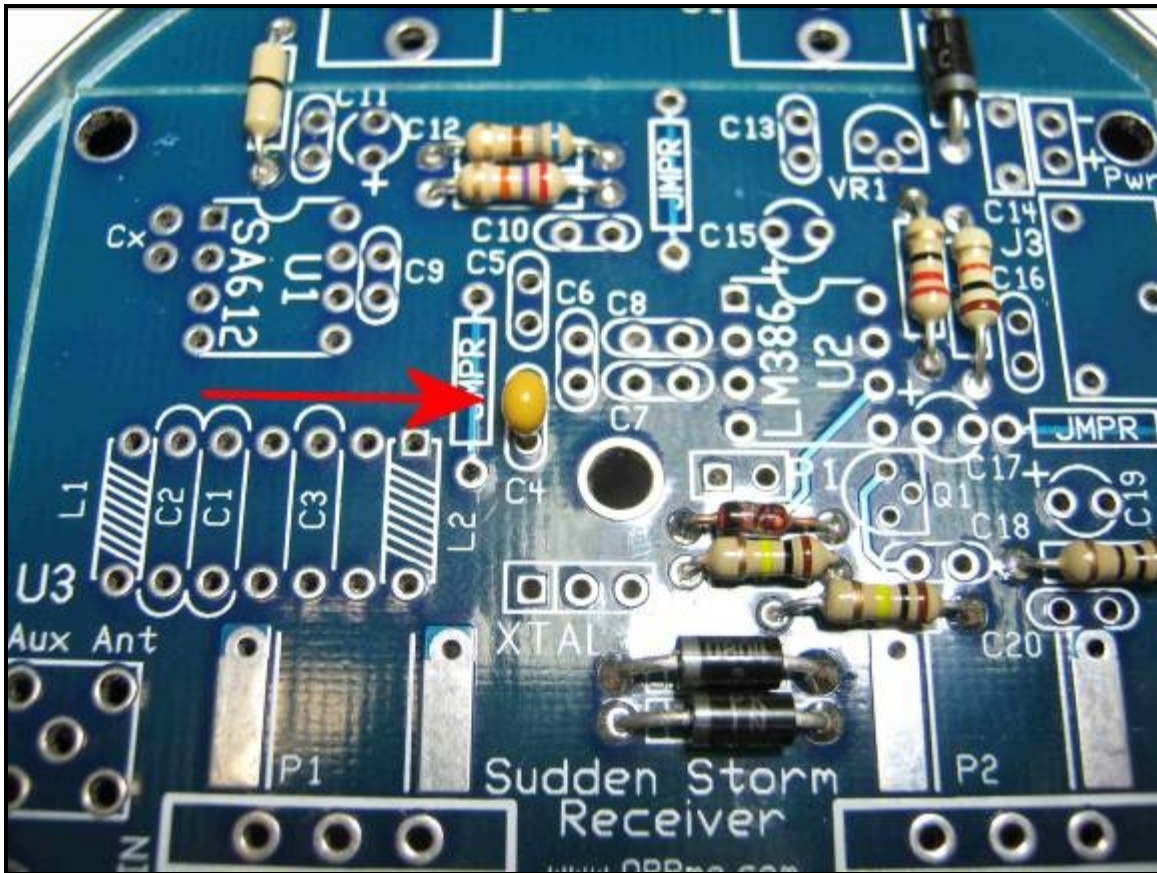
D1 & D2 = 1N4005



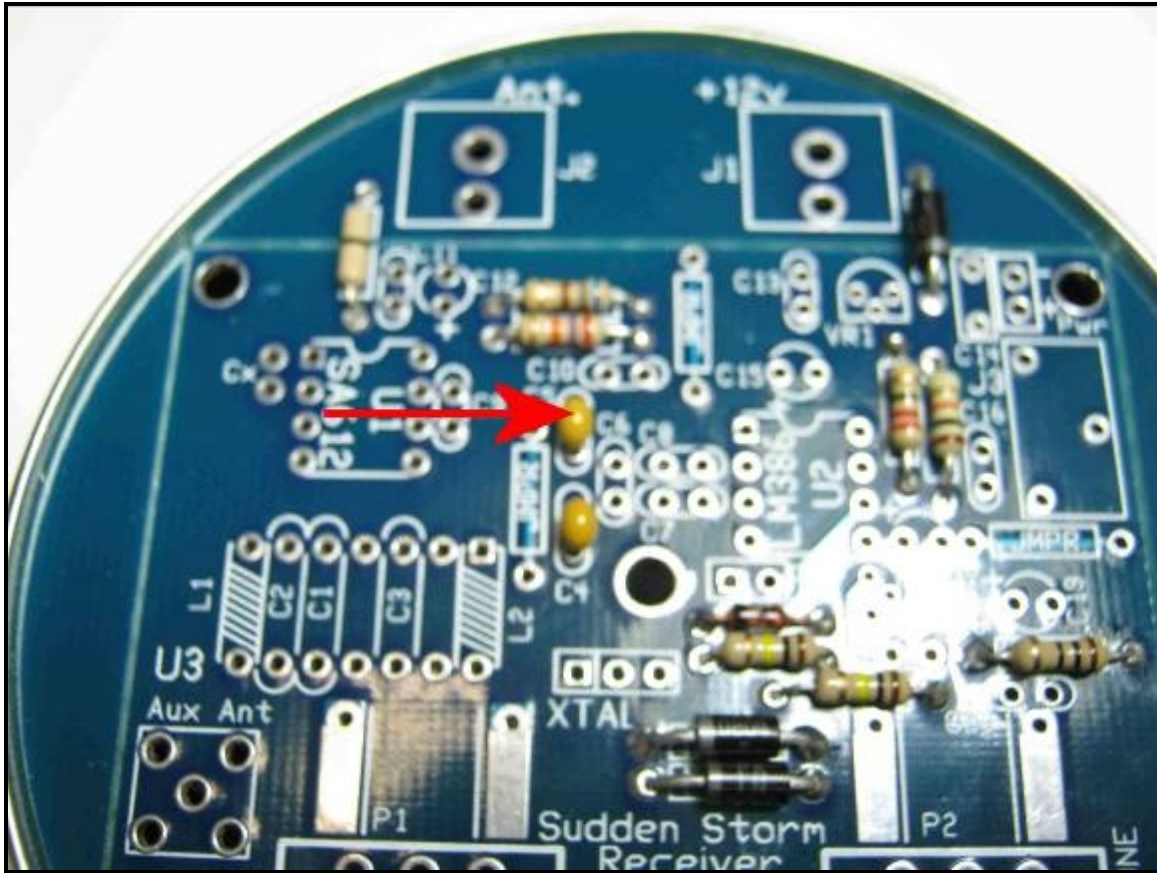
D3 = 1N5818



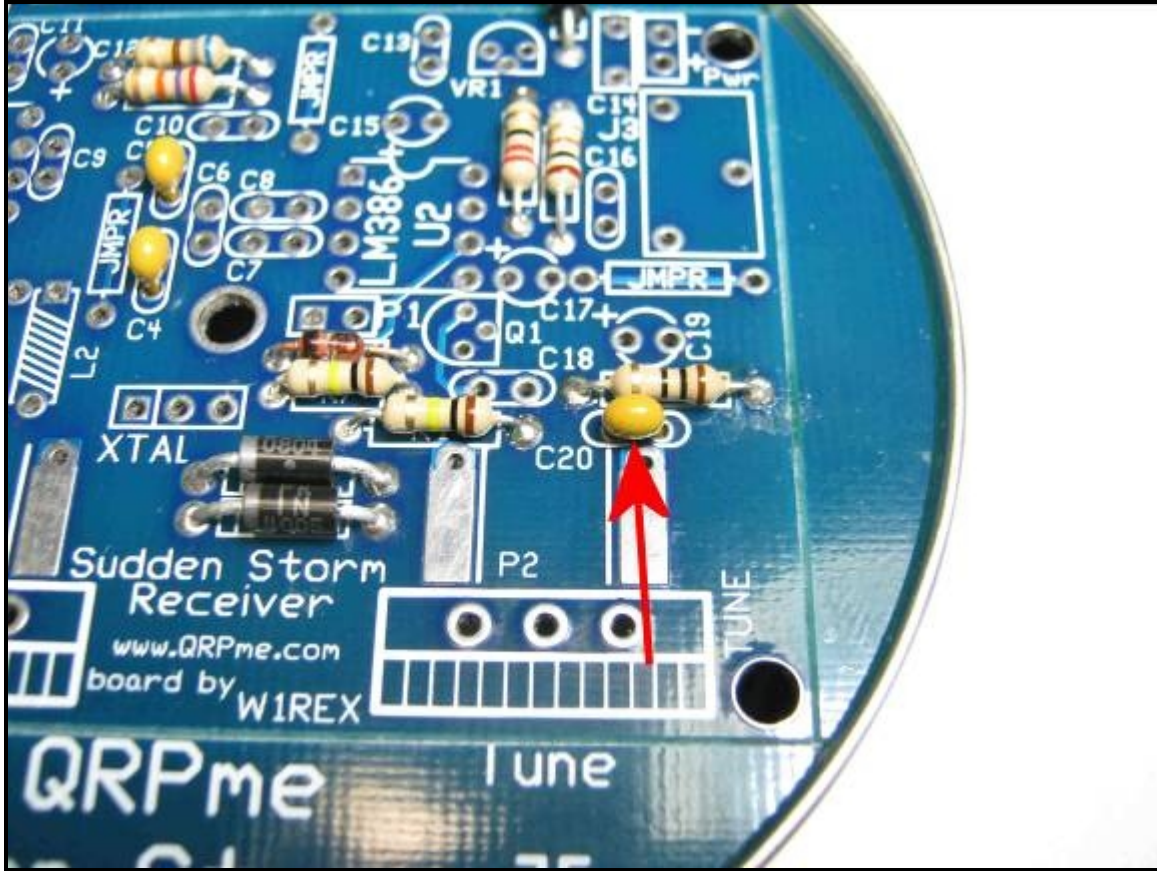
D4 = 1N4148 or 1N914



C4 = .01uf (103)

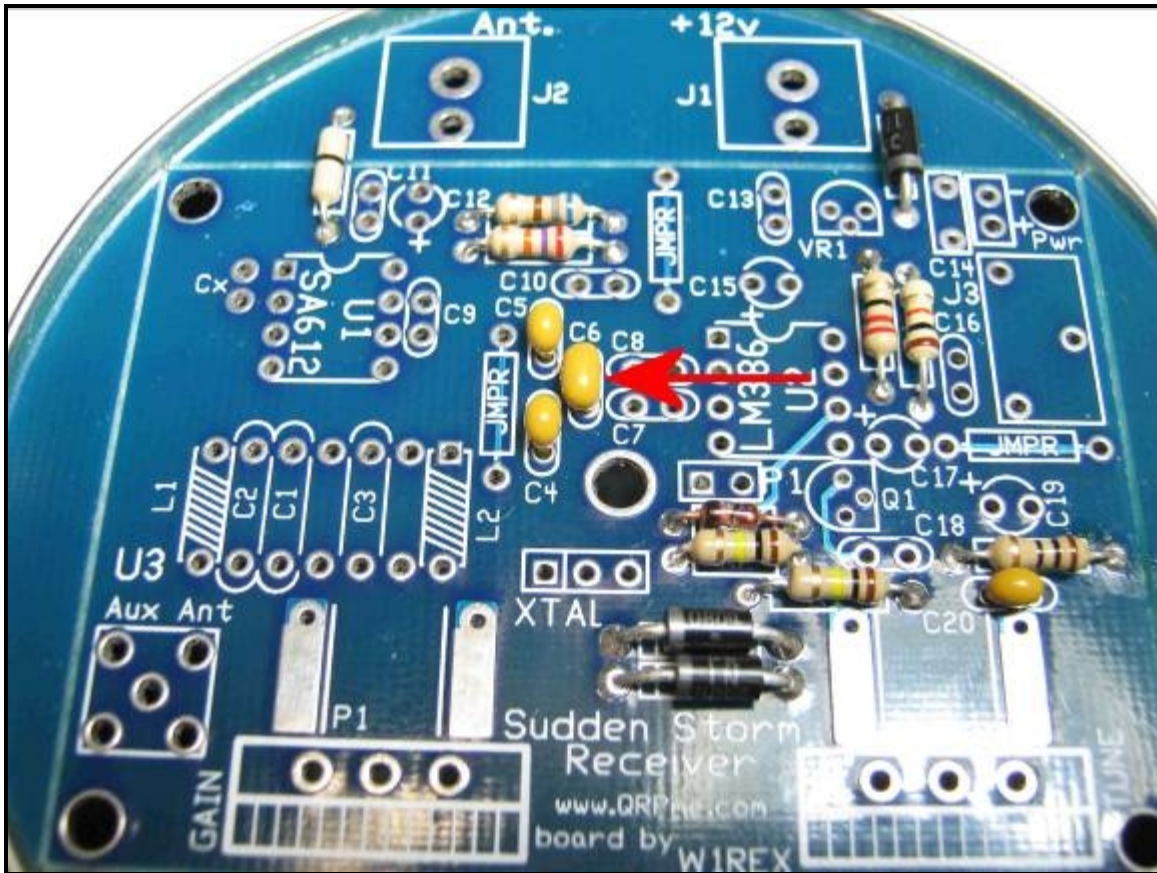


C5 = .01uf (103)

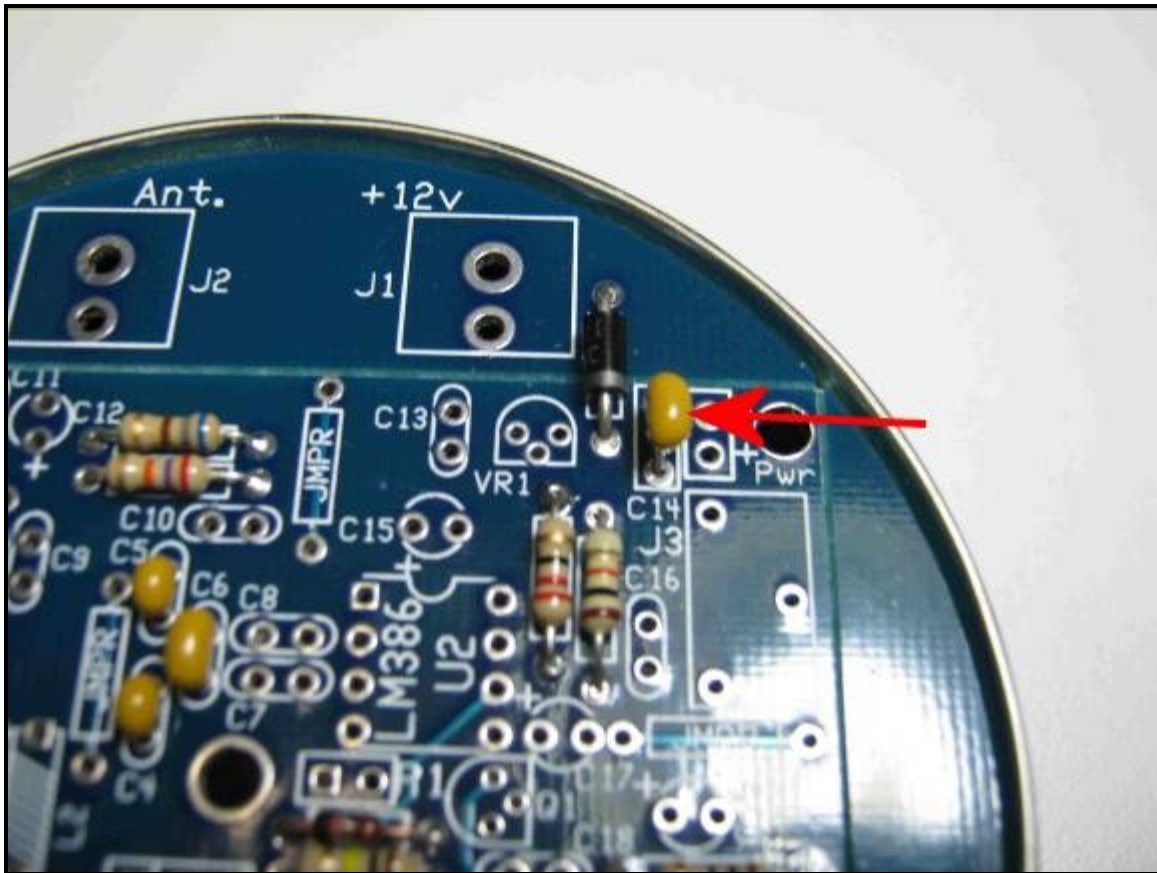


C20 = .01uf

(103)

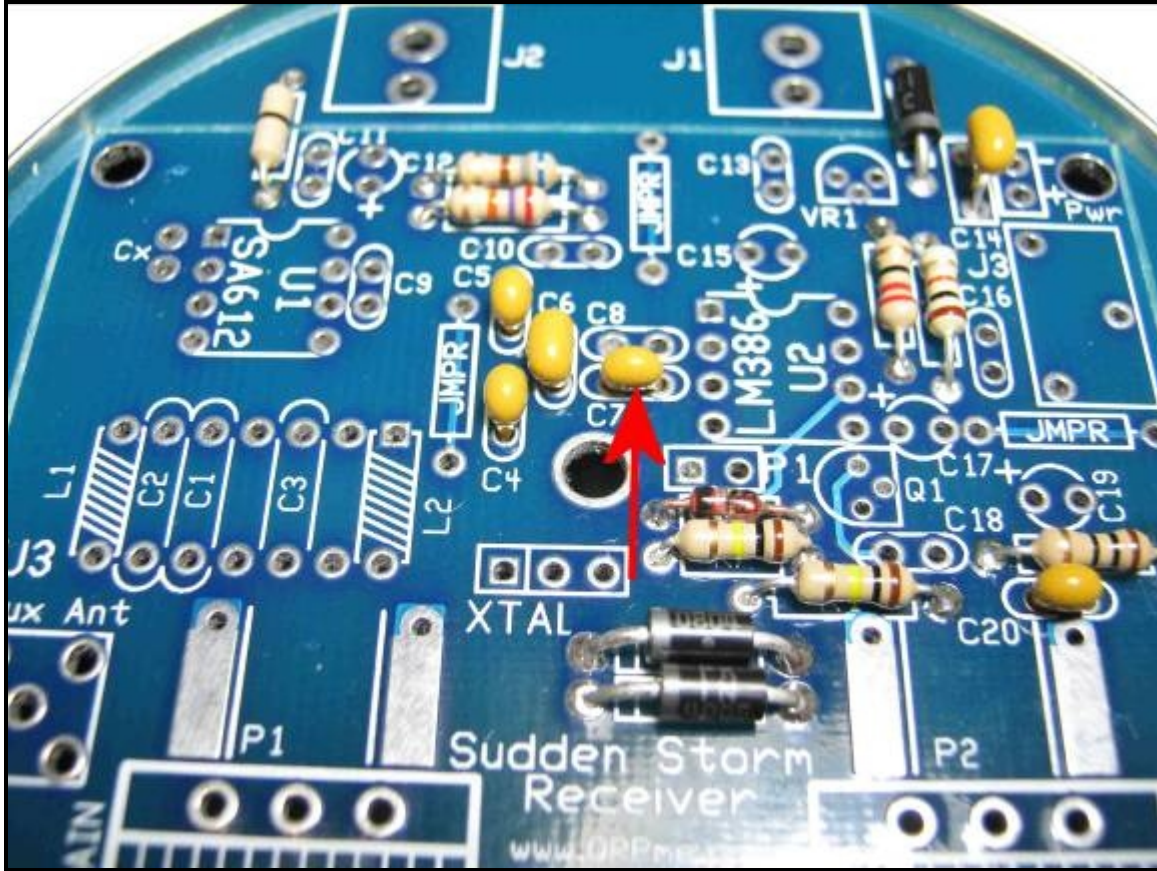


$C6 = .33\mu\text{f}$ (334)

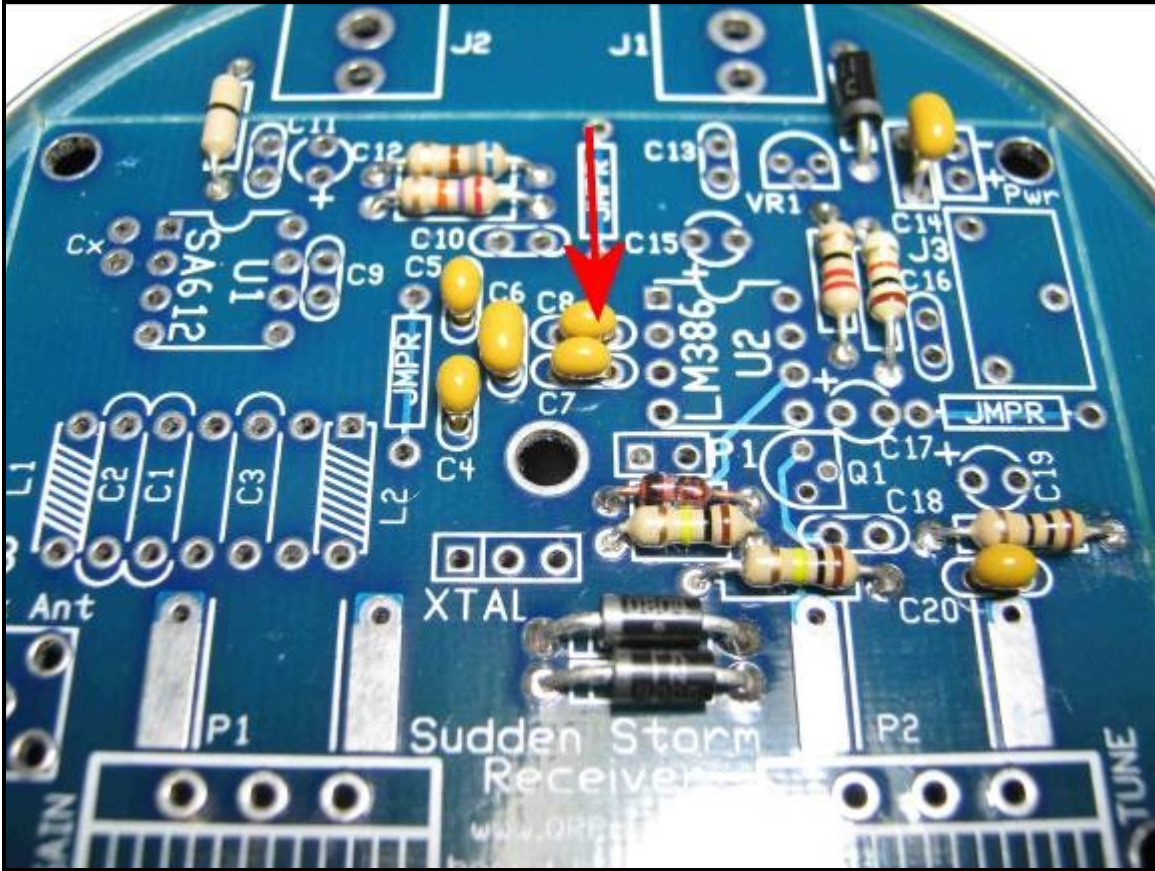


C14 = .33uf

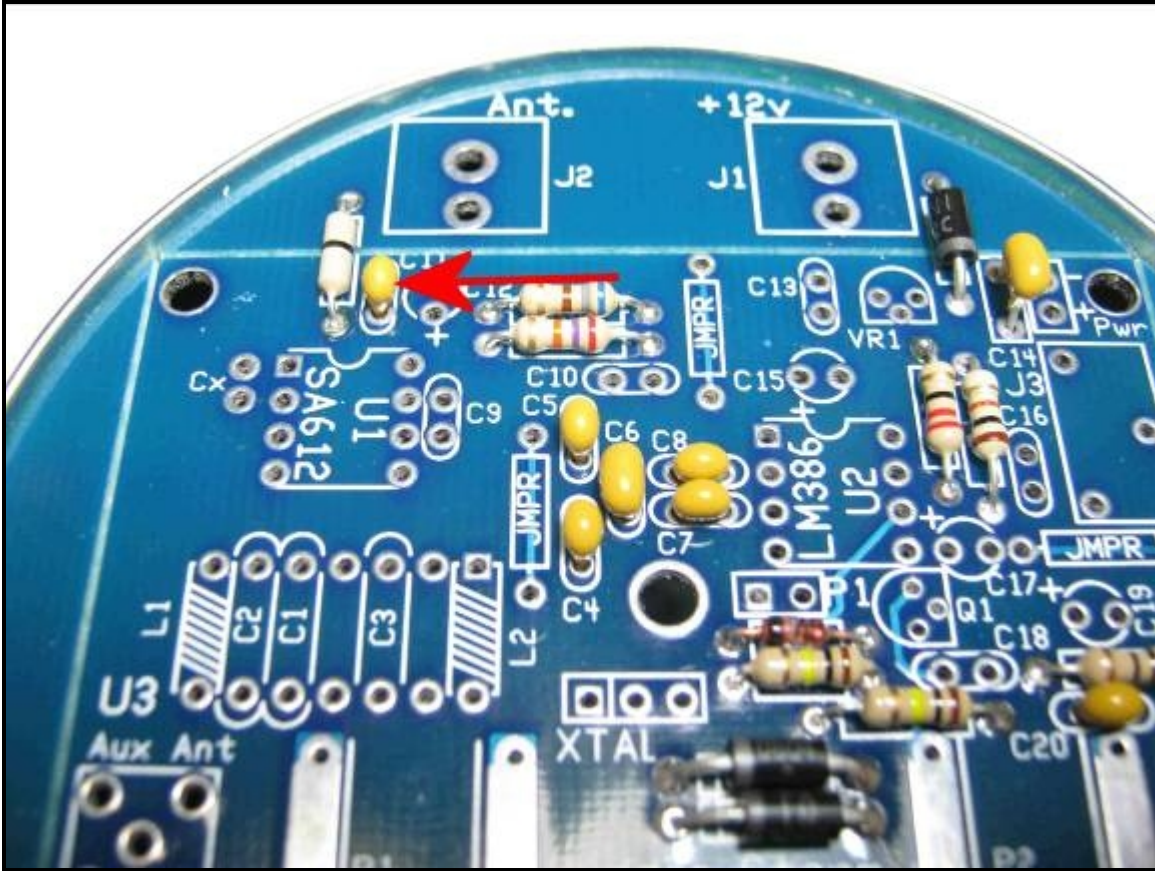
(334)



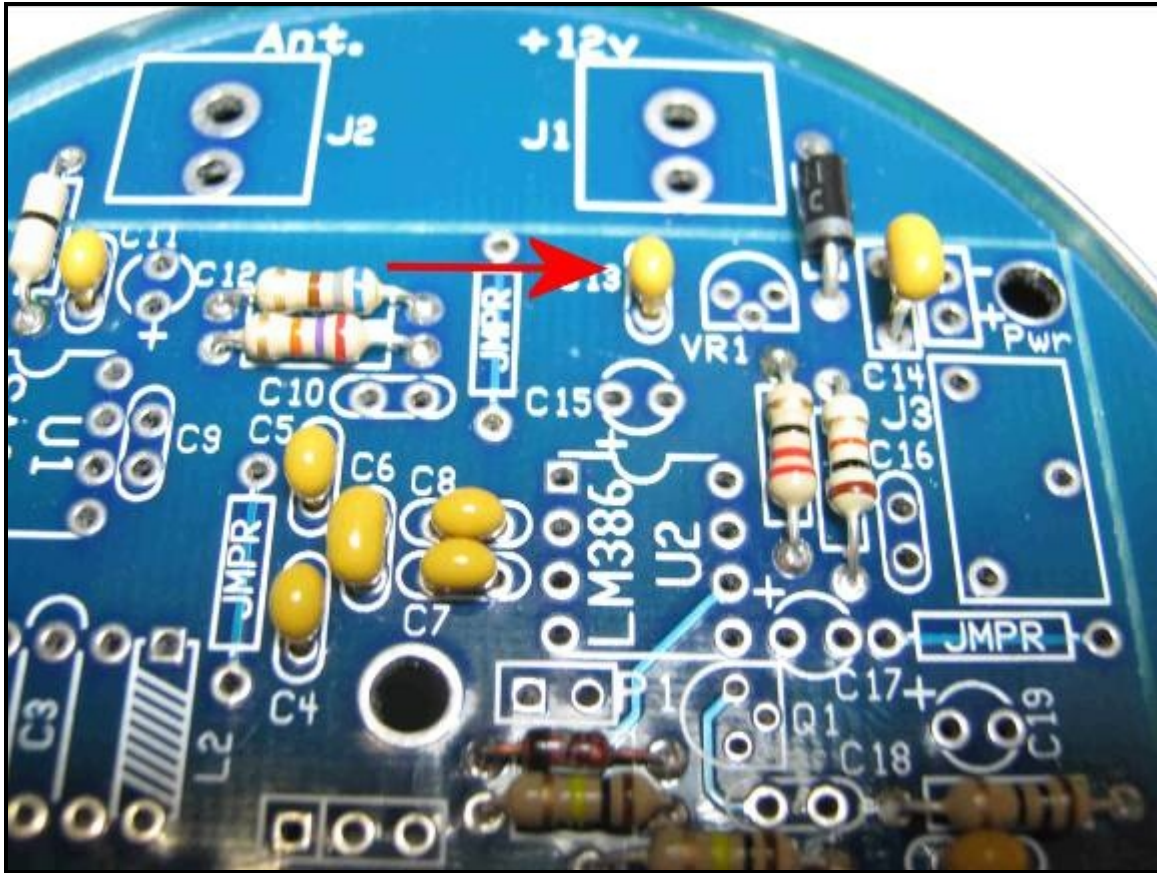
C7 = .1uf (104)



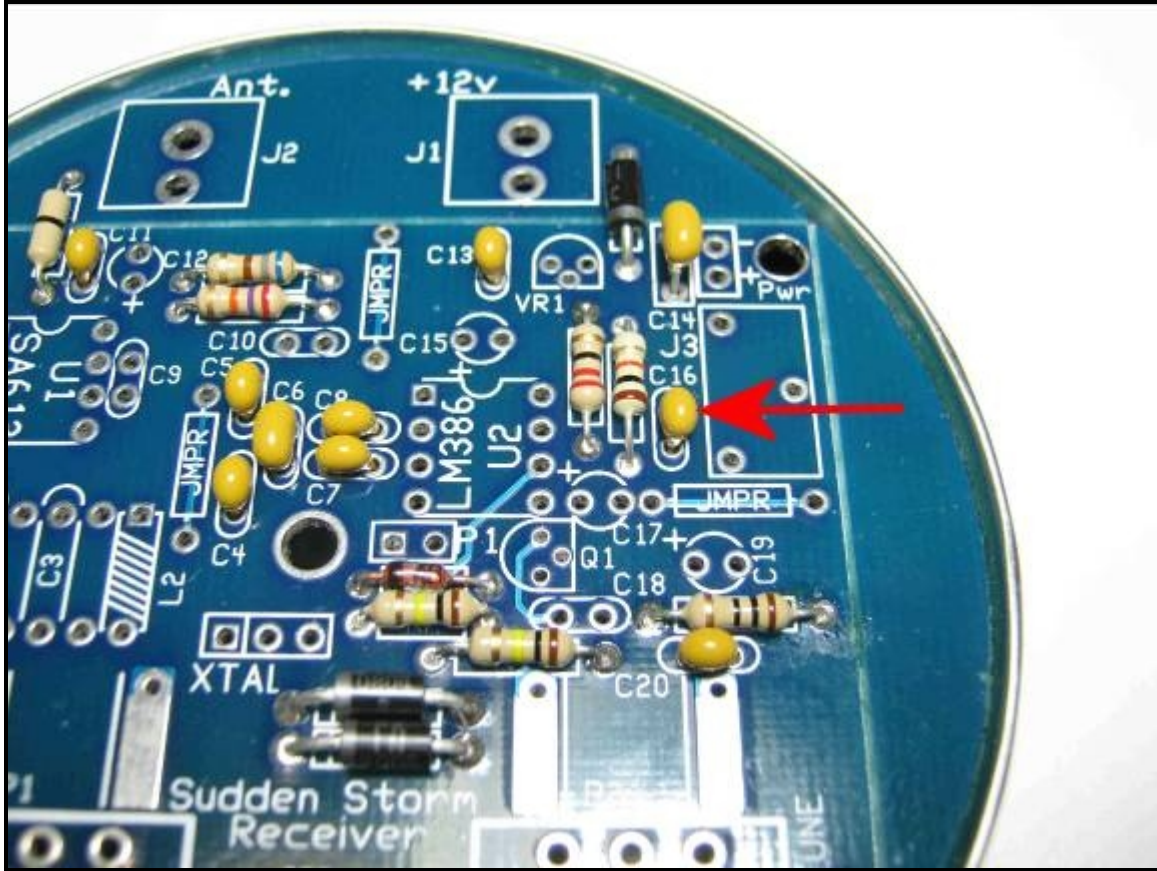
C8 = .1uf (104)



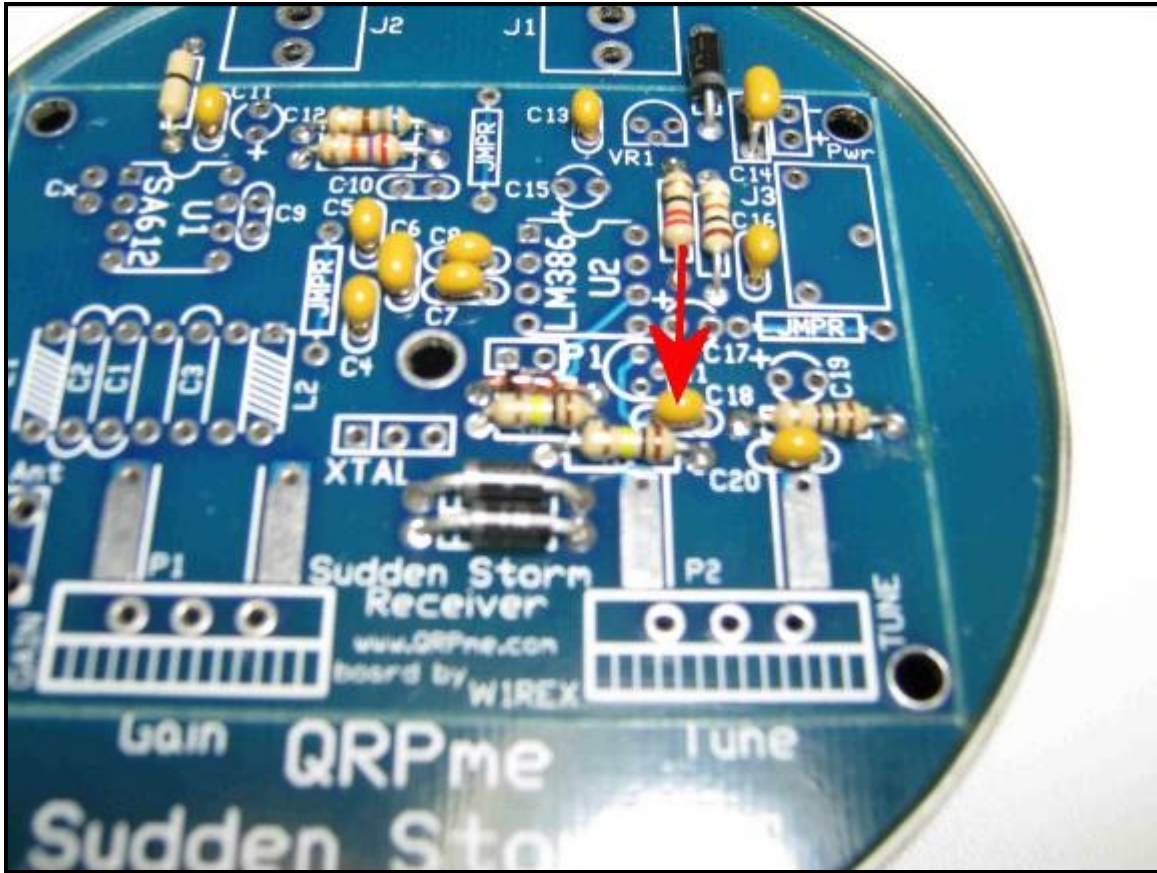
C11 = .1uf (104)



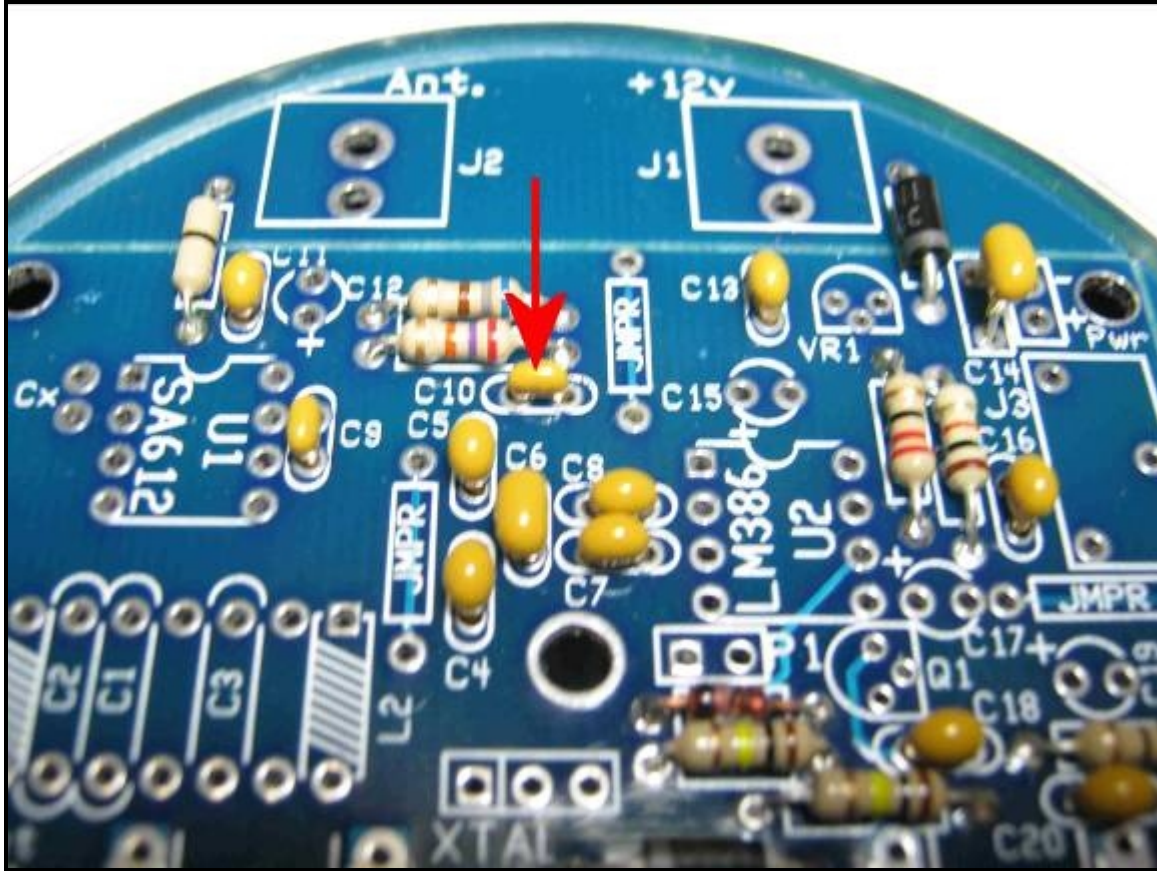
C13 = .1uf (104)



C16 = .1uf (104)



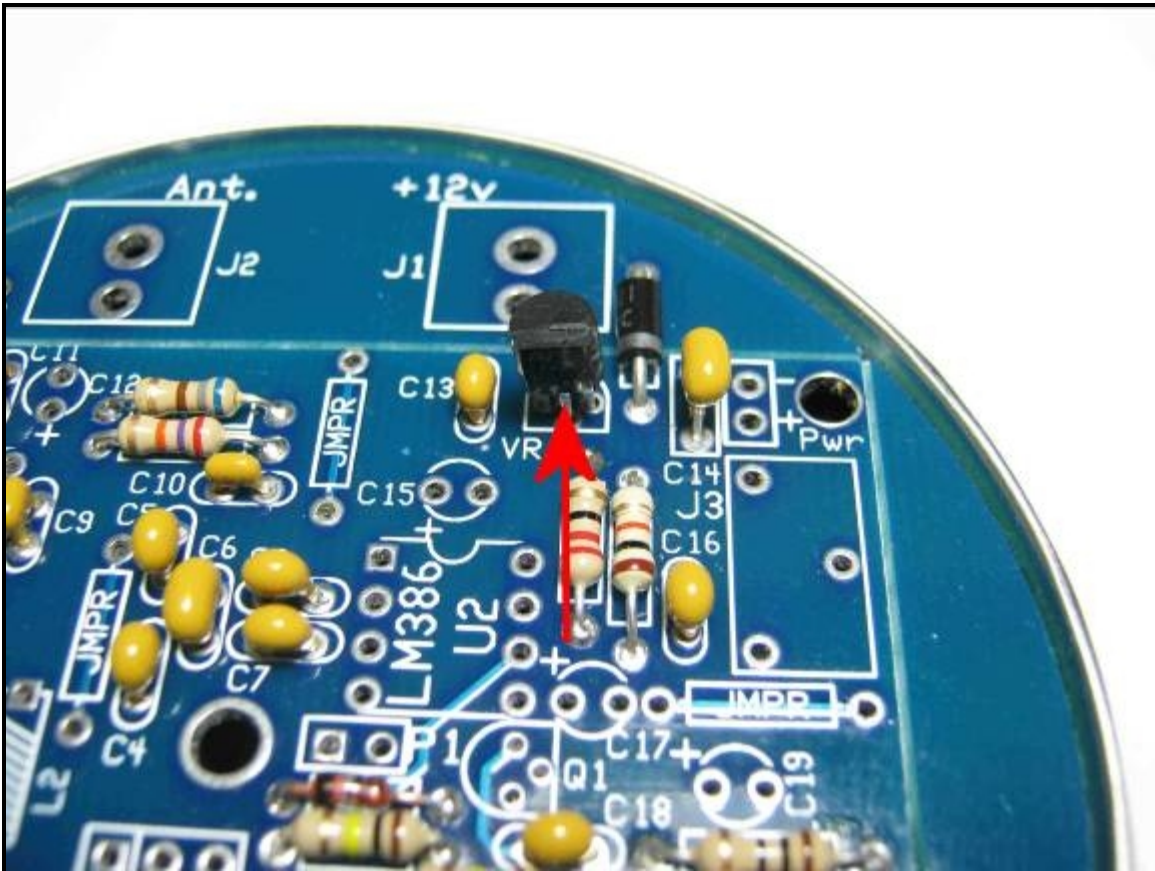
C18 = .1uf (104)



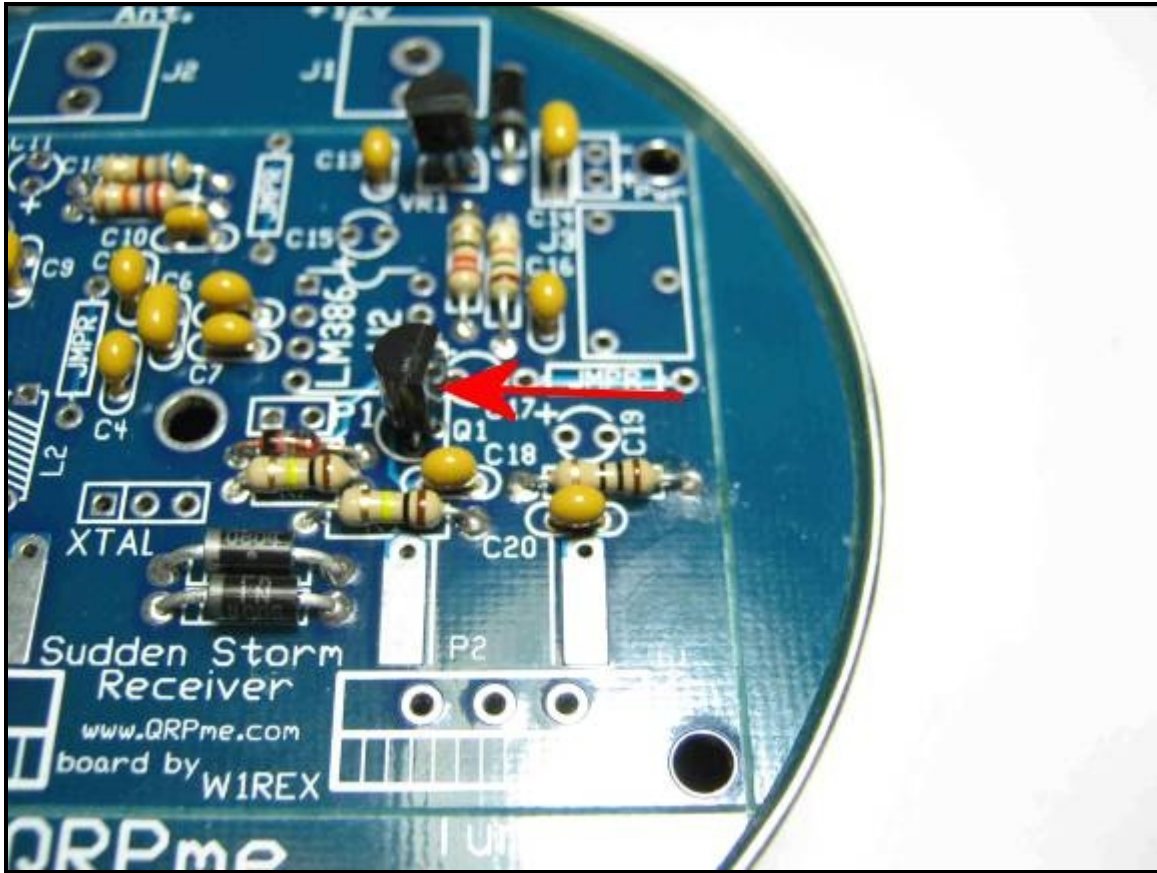
C10 = 100pf

(101)

Install the 2 TO92 devices next.

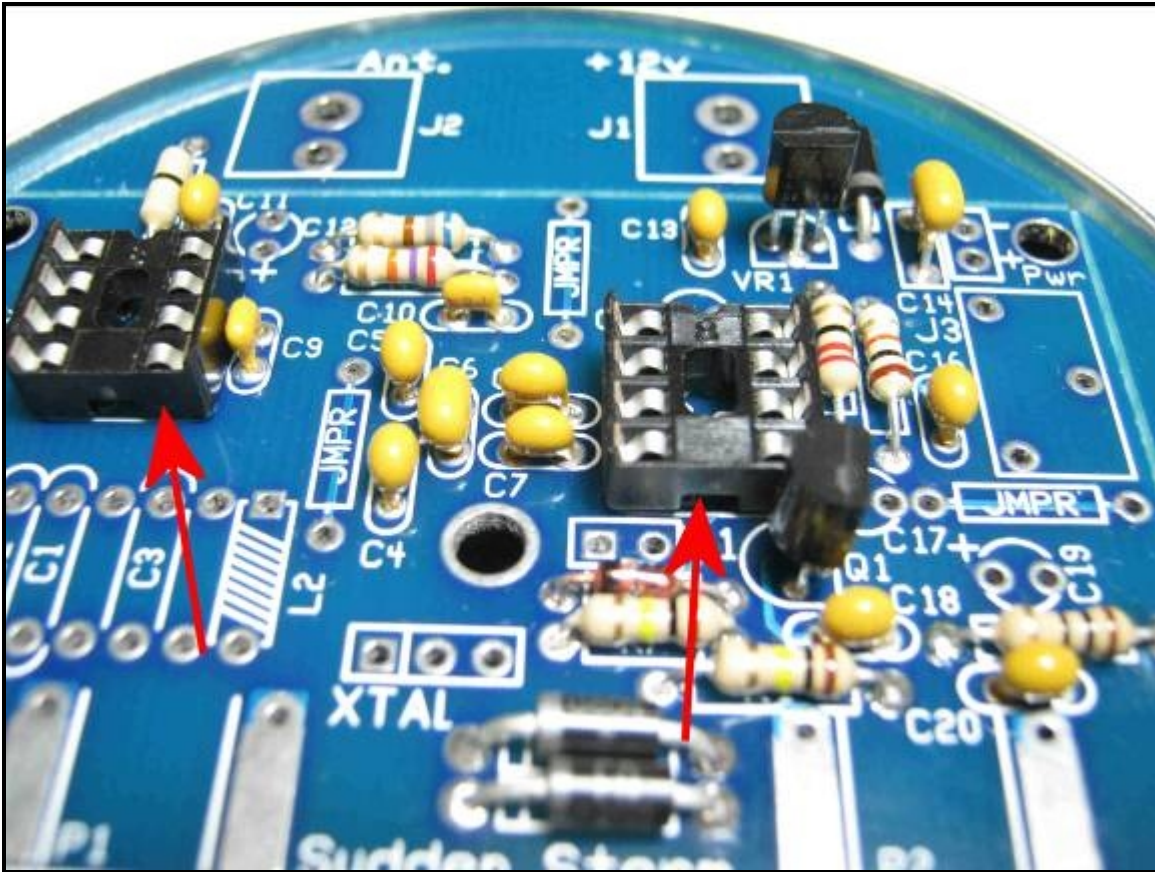


VR1 = LM7809ACZ



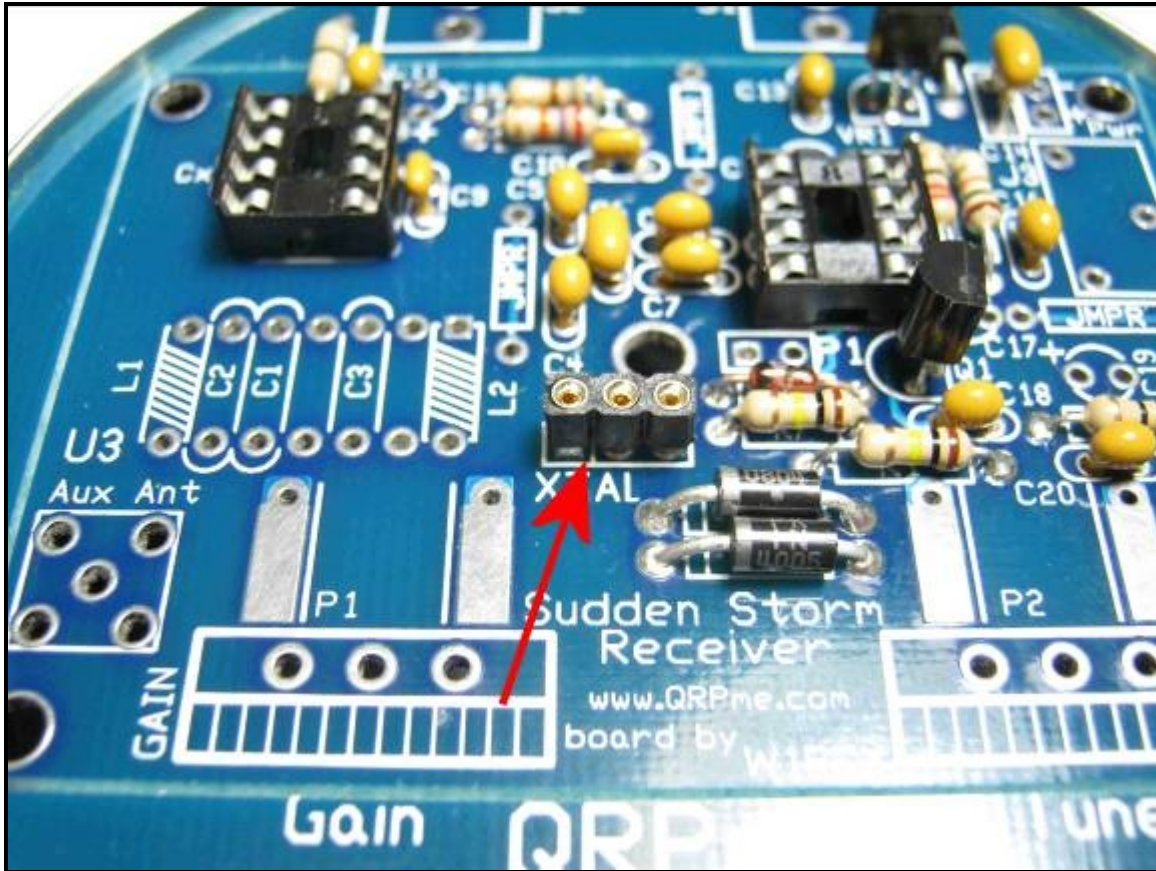
Q1 = 2N7000

Now install the IC and crystal sockets.



U1, U2 = 8 pin DIP sockets

Install the sockets so that the little notch in the socket matches the notch in the silk screen pattern.

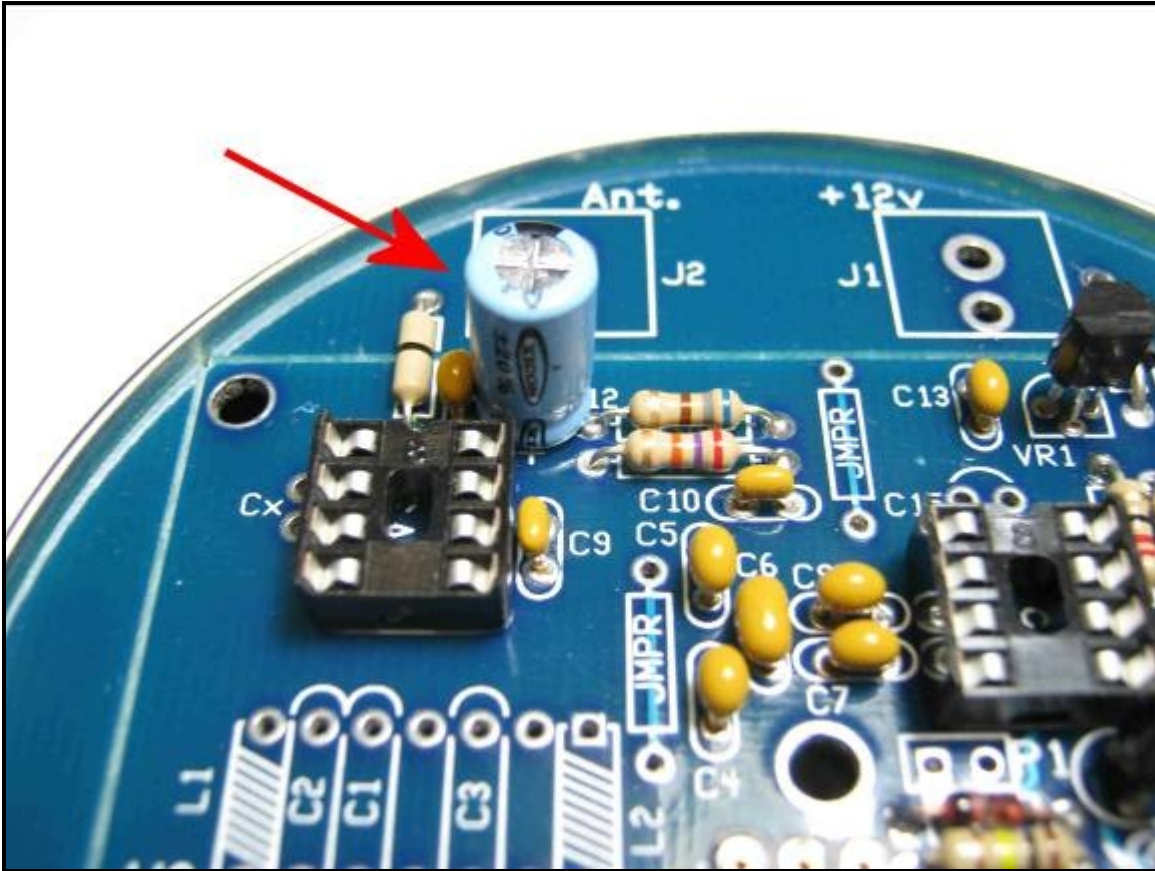


Snip off a 3 pin segment of the 8-pin SIP socket to use as the crystal socket. Solder it in place at the XTAL location.

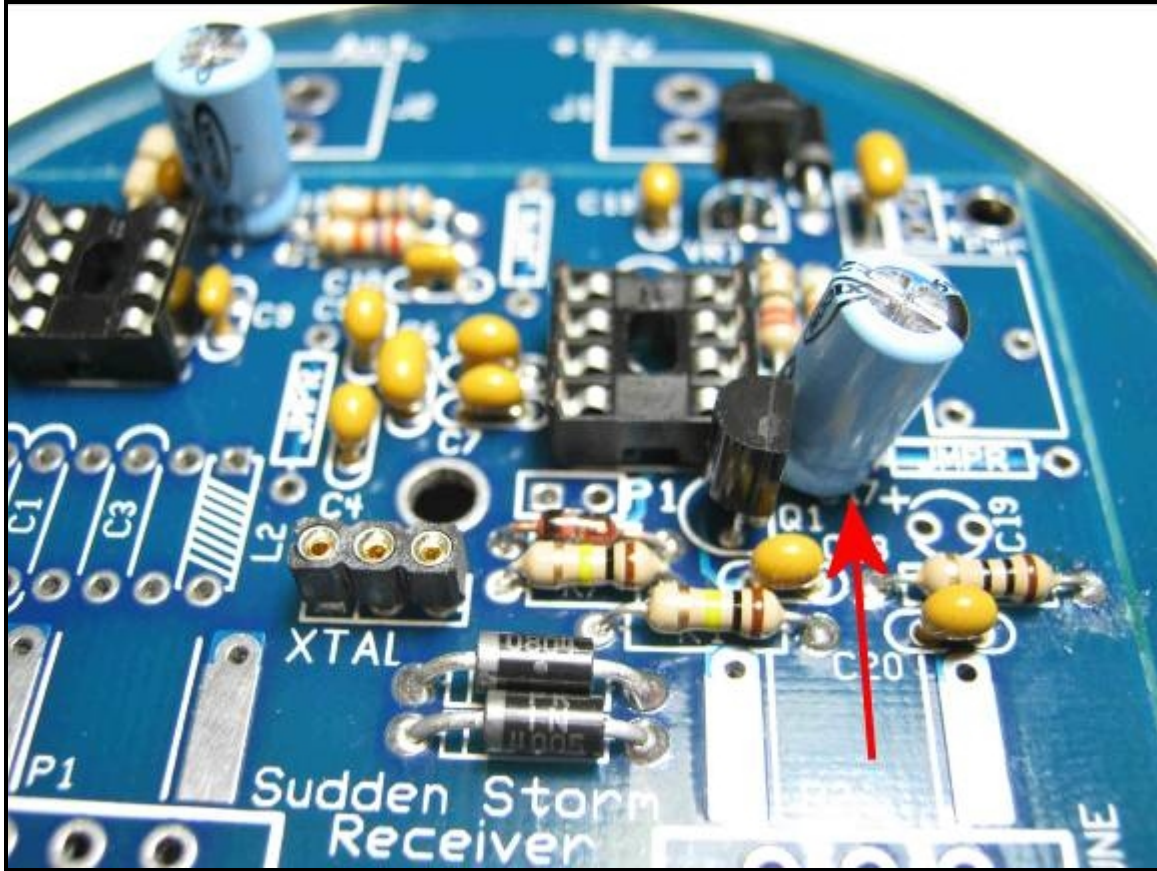


I make a handle for the XTAL socket using an odd capacitor or crystal. Hold on to the cap while soldering the socket....

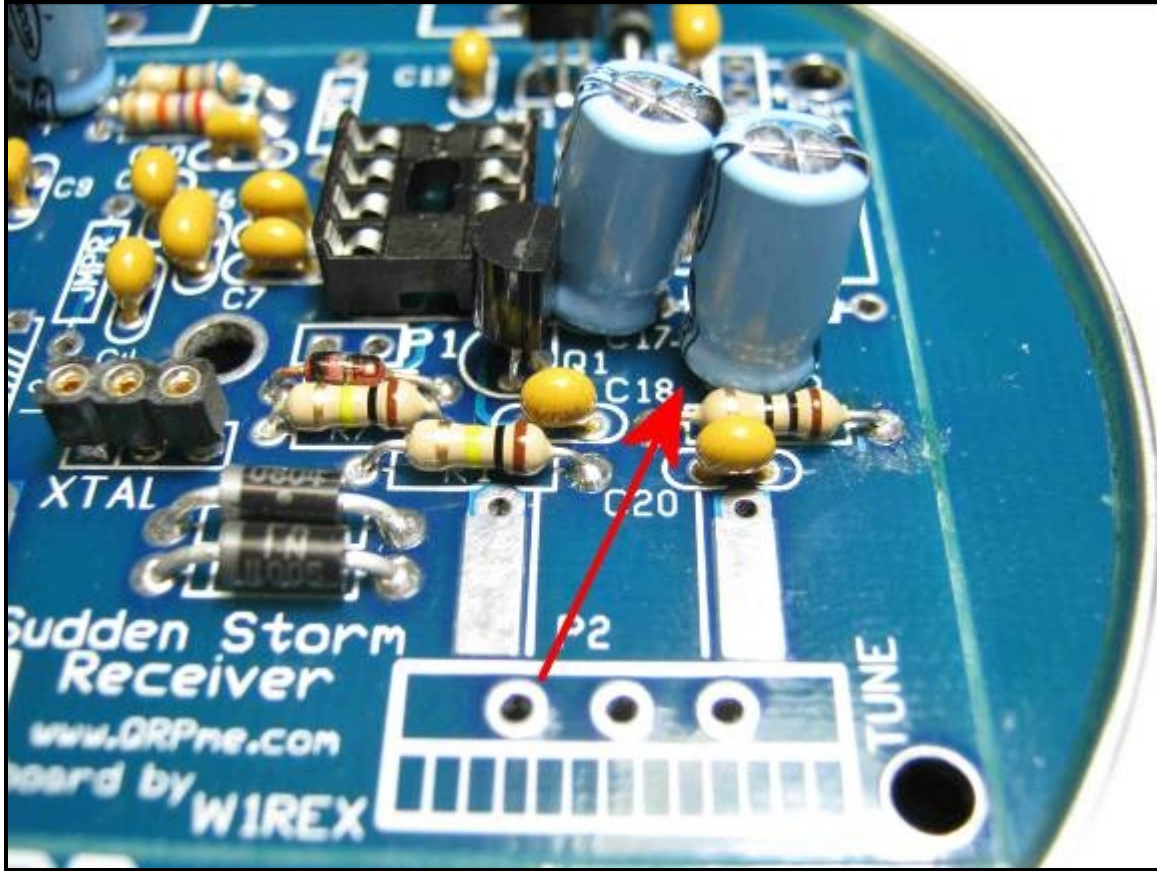
The 4 small blue electrolytic capacitors are now installed.



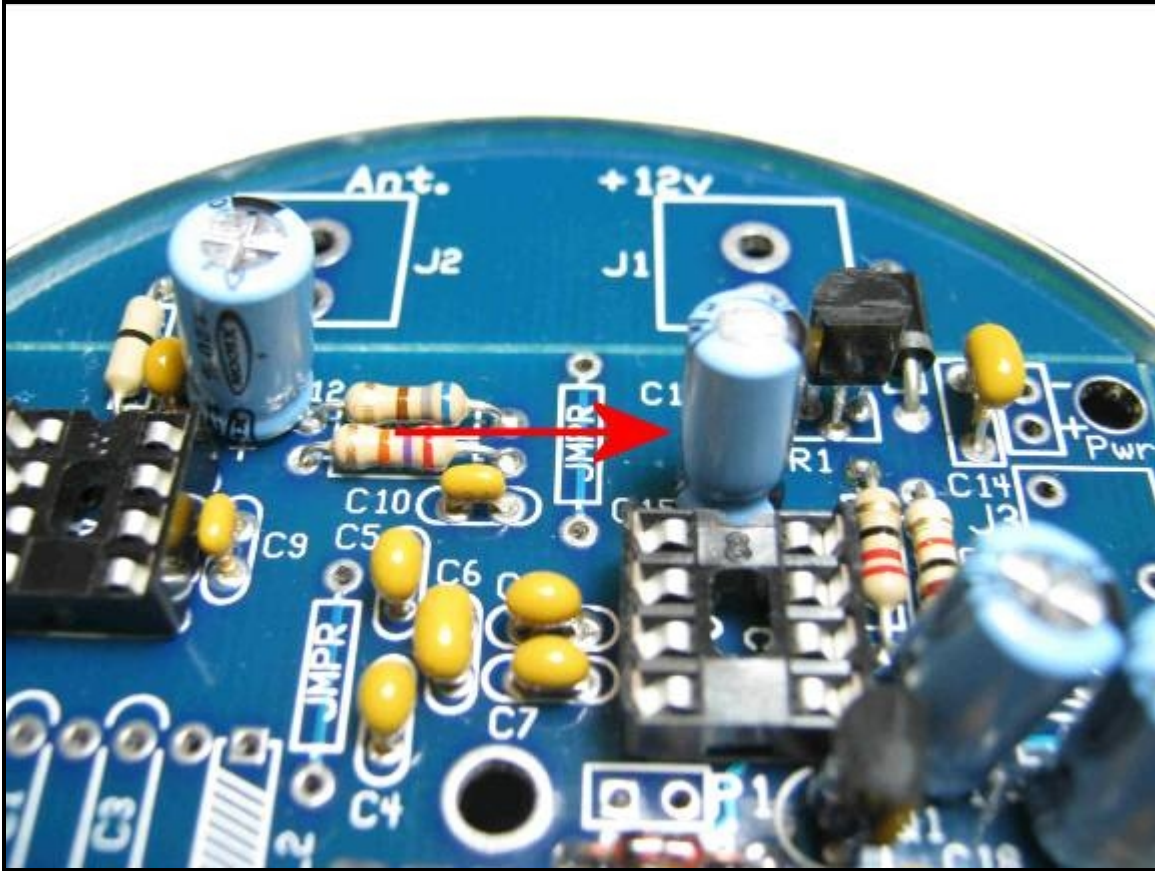
C12 = 100uf



C17 = 100uf



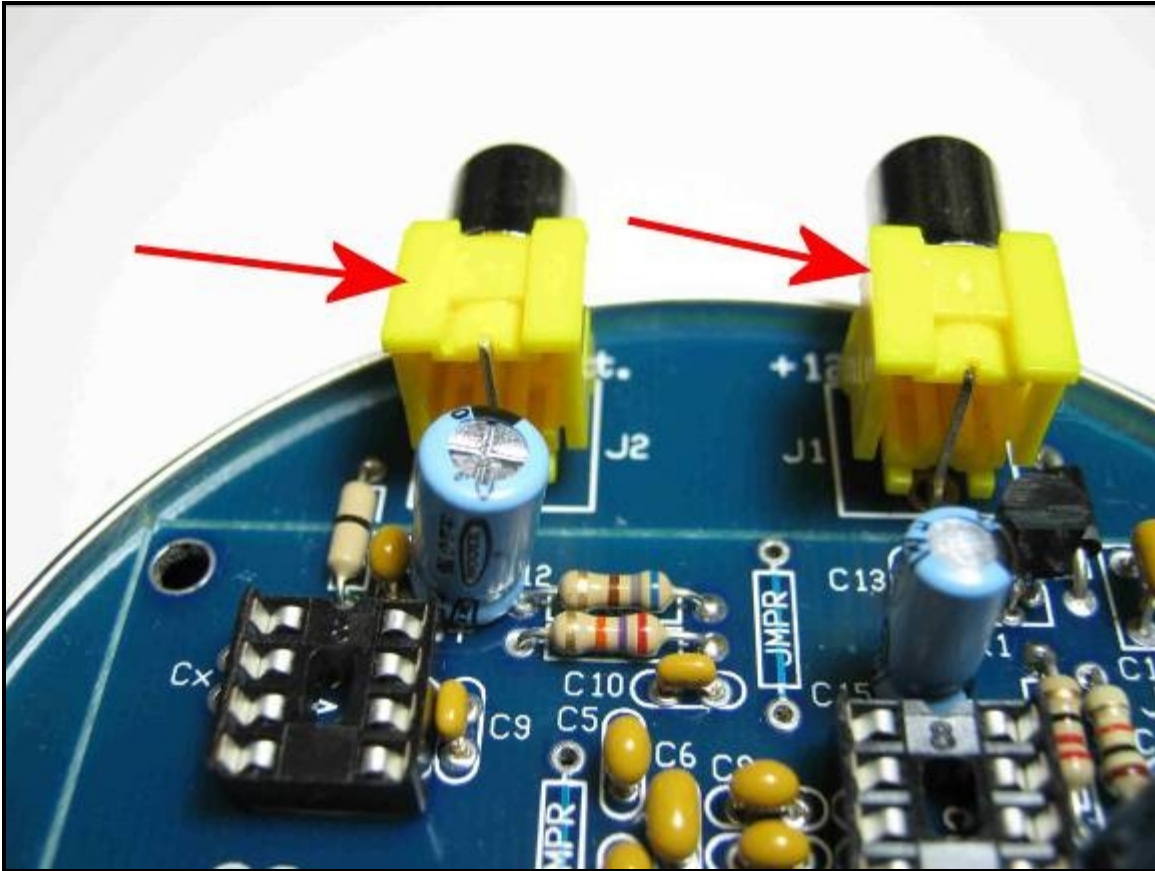
C19 = 100uf



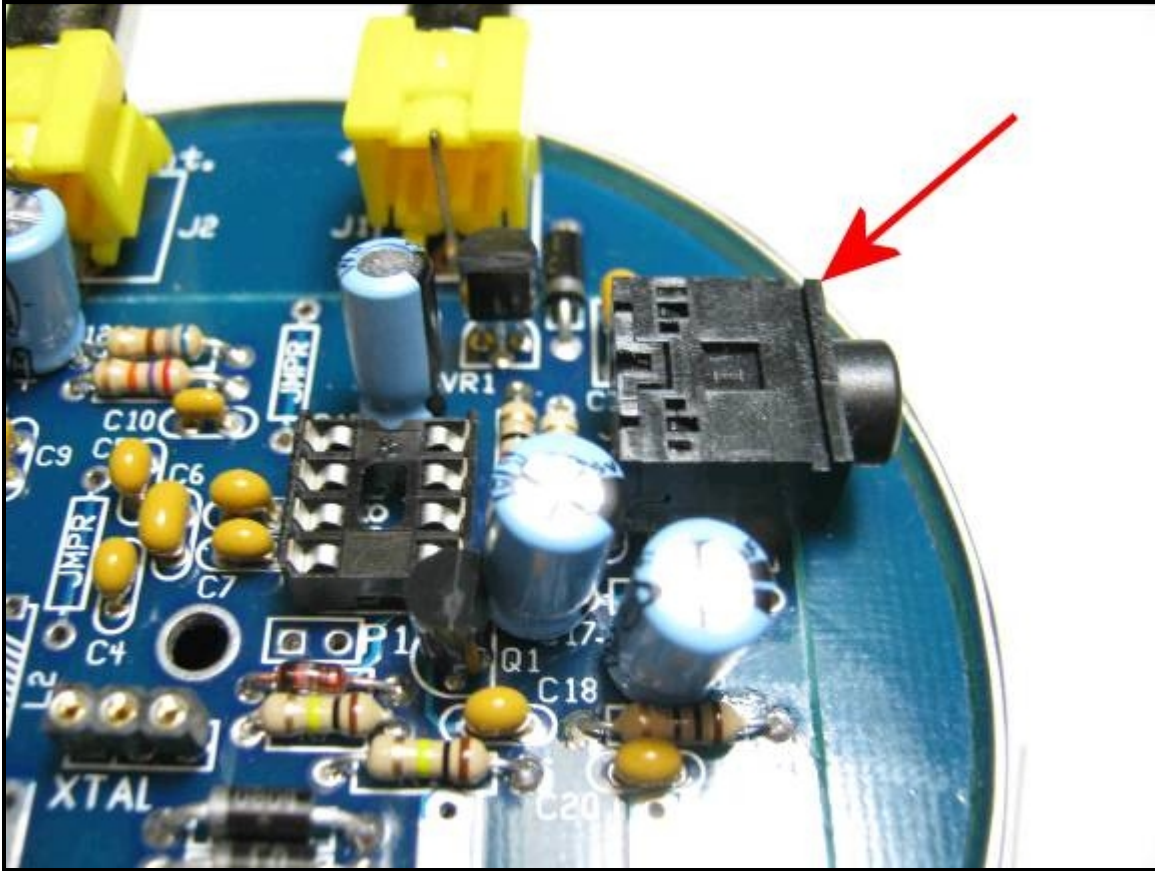
C15 = 10uf

The 'clunky' connectors can now be soldered onto the board.

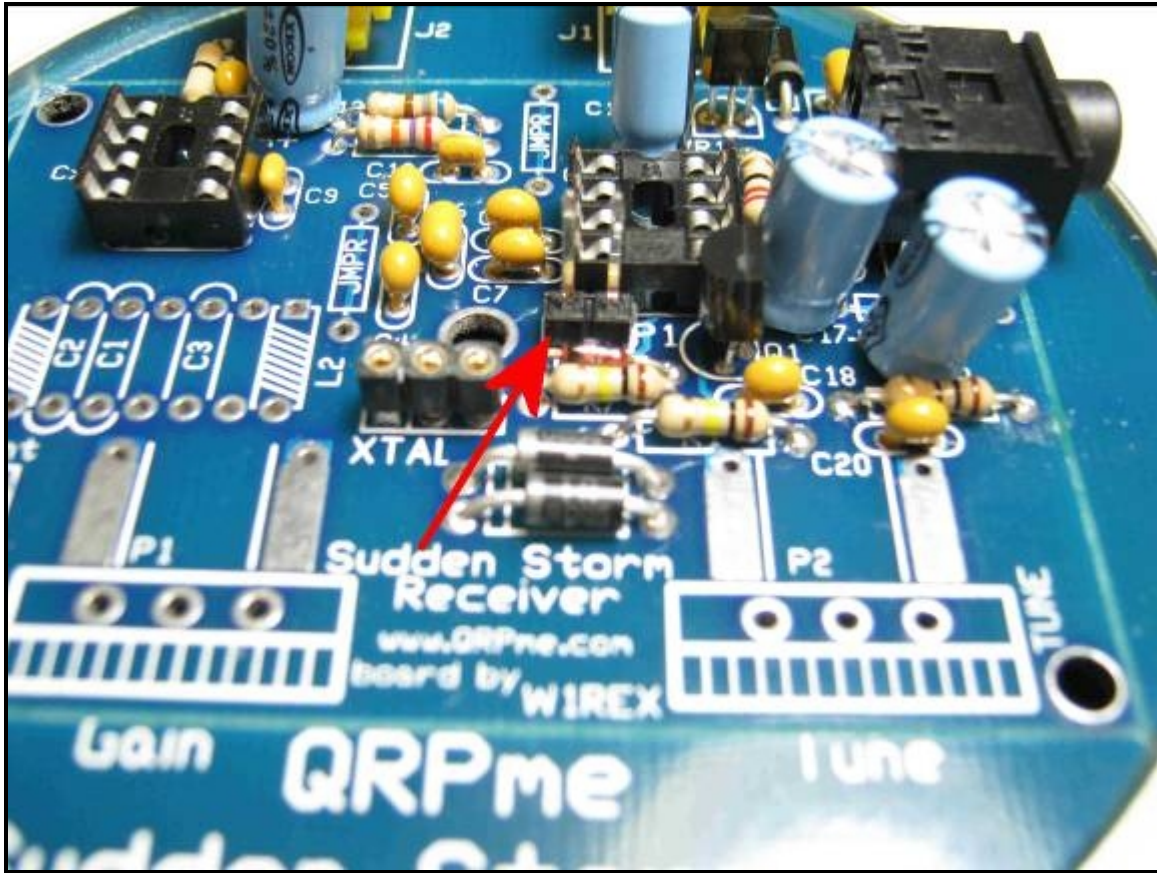
Please note that the AUX ANT and PWR connectors are optional and would be used if installing the Sudden Storm][kit in an Altoids or Zomboids tin.



J1, J2 are yellow RCA connectors



J3 is a stereo headphone jack

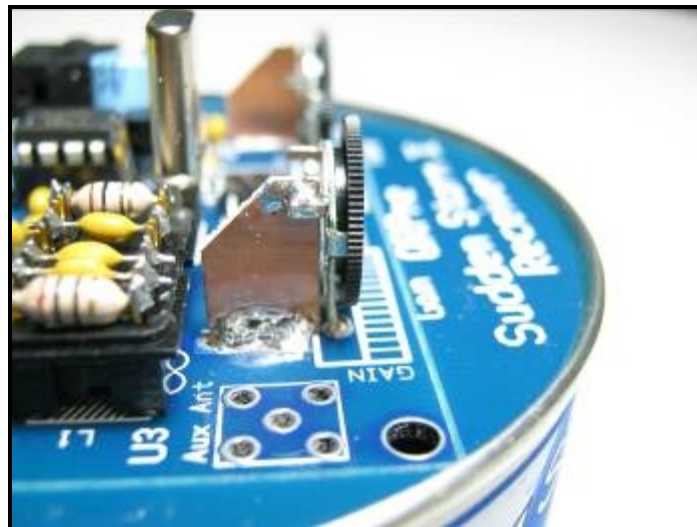


P1 is a 2 pin .1" spacing male Molex header

The thumbwheel potentiometers are next.



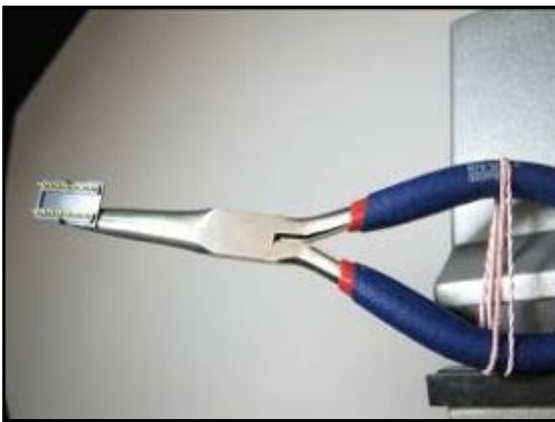
The leads on the potentiometers must first be carefully bent straight out so that the pots will stand vertical. Once the leads are modified, you can solder the 2 pots onto the board.



Small pieces of bare copper pcb material can be soldered in behind the pots (if desired) to provide a stiffener for relieving operator stress on the pots while adjusting them. The long rectangular tinned pads are there for mounting the stiffeners.

The bifurcated carrier is next.

You have to be very careful soldering the parts onto the carrier. The plastic used for the carrier is easily melted so a *GOOD* heat sink should be used when soldering the parts. Use a small electronic vice, a binder clip or needle nose pliers with an elastic band around the handles to keep them closed as a make-shift heat sink for soldering. Clamp one row of pins in your heat sink device, install each part into its proper pair of pins and solder only the one side you have a heat sink on. Make sure that you solder the connection quickly and follow the soldering operation with a nice long cooling breath to help keep the heat from melting the plastic. Don't hurry and try to solder all the pins in quick succession as this might cause excess heat to build up in the heat sink which might affect the plastic.



Once you solder the components on the heat sink side, turn the carrier around and clamp the unsoldered side. Now you can solder the remaining connections and trim the excess leads. The tuning plug is now complete.

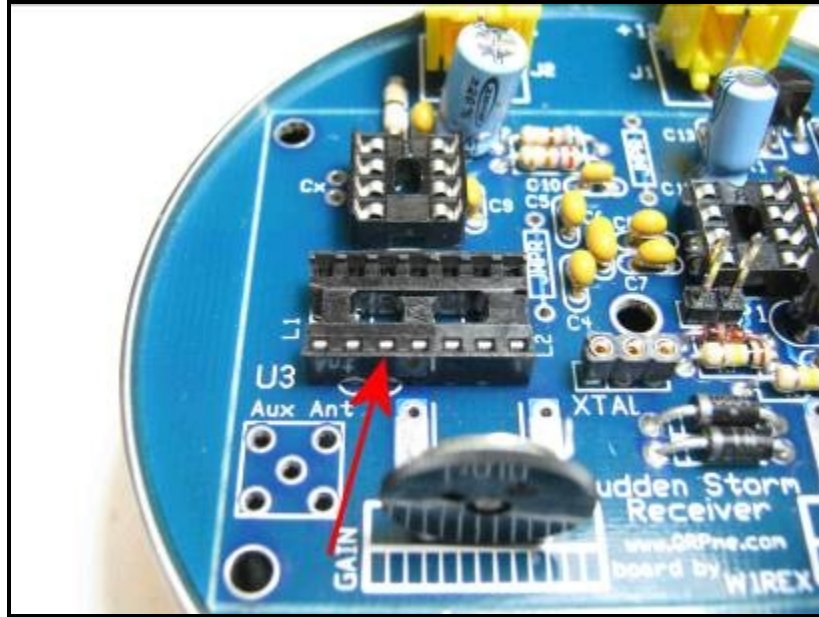
The layout of the components from left to right is:

Pins 1-14	10 uh	(brn-blk-blk)
Pins 2-13	220 pf	(221)
Pins 3-12	68pf	(680)
Pins 4-11	unused	
Pins 5-10	.01 uf	(103)
Pins 6-9	unused	
Pins 7-8	10 uh	(brn-blk-blk)

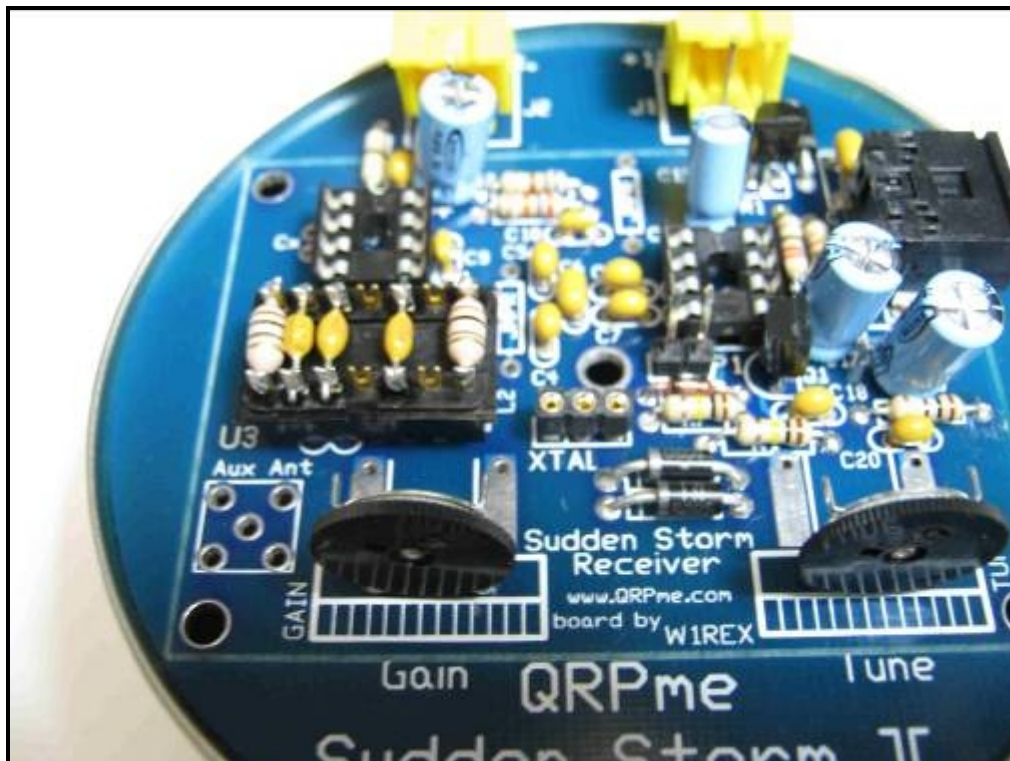
The IC carrier is used as a tuning plug providing a rough match between the antenna and the SA612 Gilbert cell mixer chip. A separate tuning plug is required for each band that you want to use the receiver on. A table of suggested component values used for each band is shown below.

<u>Band</u>	<u>C1</u>	<u>C2</u>	<u>C3</u>	<u>L1</u>	<u>L2</u>
80m			.01uf	6.8	22uh
40m		68pf	220pf	.01uf	10 10uh
30m			.01uf	10	10uh
20m			.01uf	22	6.8uh

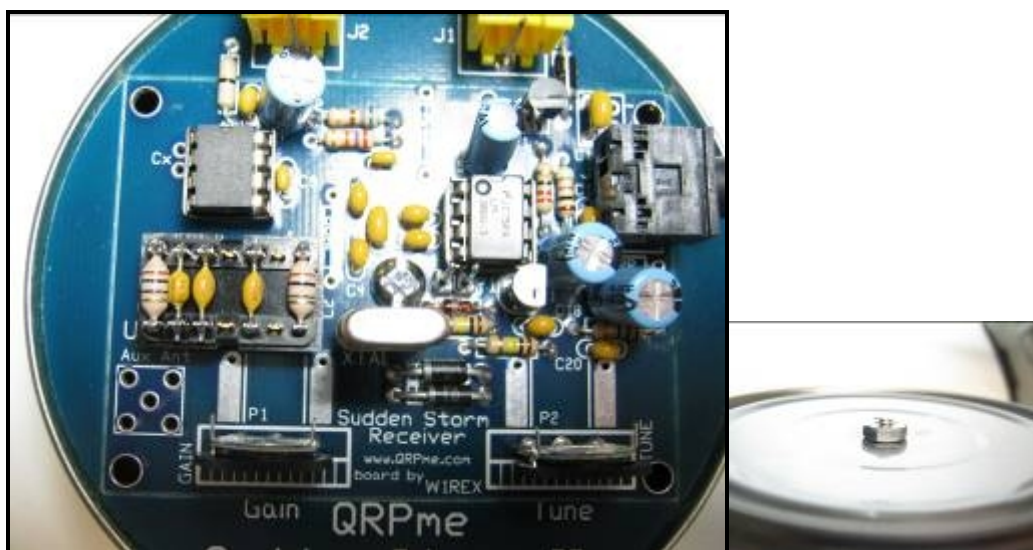
(as of right now C1, C2 would be the same for all 4bands...although that might change with further experimentation.... W1REX)



Solder in the 14 pin IC socket at position U3.



Then install the frequency plug into the socket.



Mount the board onto the can, insert the bolt down through the hole in the center of the board and out the hole in the bottom of the can. Add the nut and tighten to clamp the board to the can.
Don't over-tighten!



Congratulations!

You're done!