

Cz is normally a short circuit

or

you could place a fixed capacitor in Cz  
, bypass the varactor tuning  
and make each band module  
tune a frequency directly

3 capacitors are the same  
for all band modules

27pf    220pf    .01uf

trim is a 9-50pf trimmer cap  
once kit is operational:

install band module

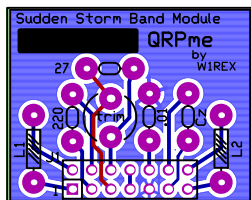
tune to a strong signal somewhat in the middle of the band

adjust trim cap for maximum signal strength

use a non-conductive adjustment tool

L1, L2 as per Sudden Storm builder's guide

	L1	L2
80m	39uh	33uh
40m	10uh	15uh
30m	4.7uh	10uh
20uh	2.2uh	6.8uh



Drill tape data

Tool Code	Hole Size	Sym bol	Hole Count

Board type: FR4  
Board thickness: .062"  
Copper weight: 2oz  
Layer count: 2

All dimensions are in inches.

Board should have green solder mask over bare copper (SMOBC) with white silk screening on top.

View is from the top side of the board.

Co:	QRPme		
Title:	SS Band Module Data		
Board:	SS6 -BM	Revision:	A
Drawn:	W1REX	Size:	A
Date:	1/10/2013	Sheet	1 of 1