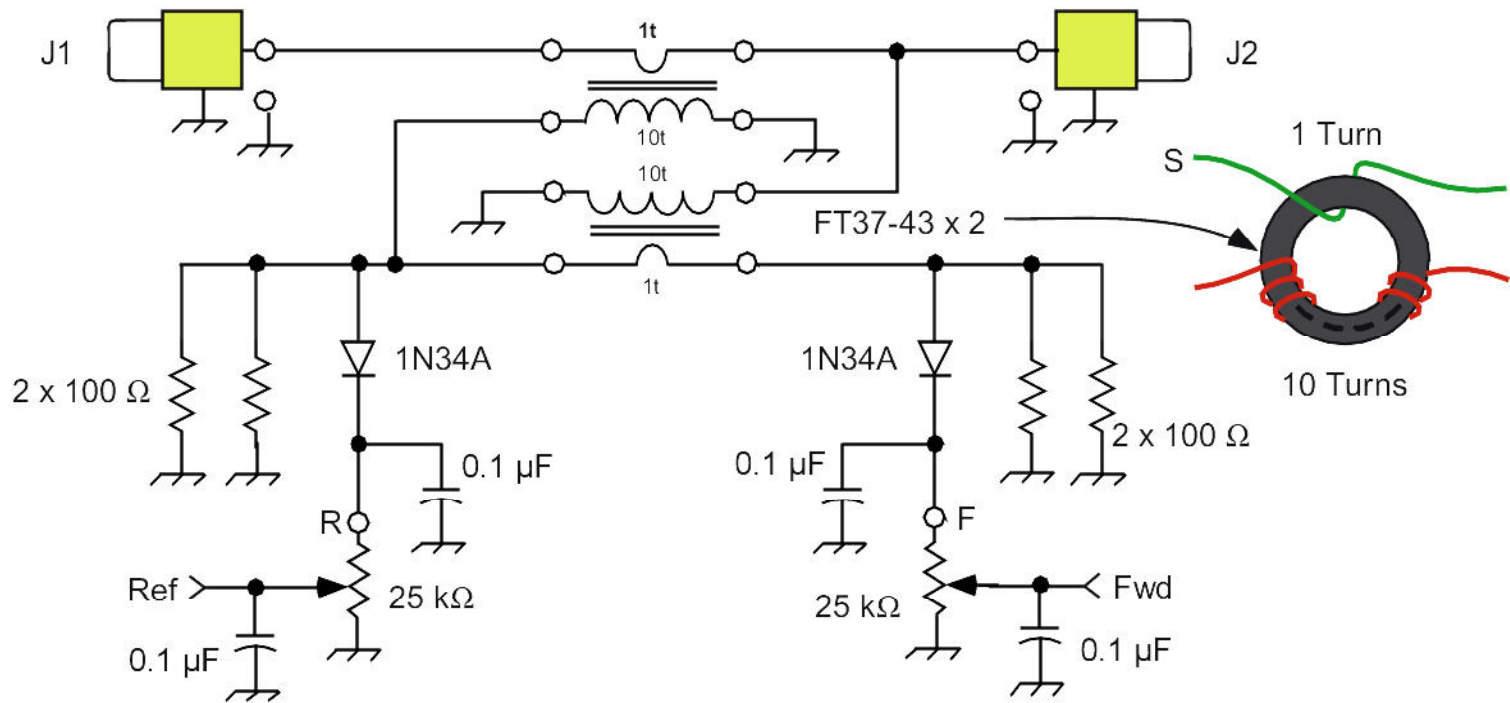


4-Port Directional Coupler Adjustments

By: W5USJ 24 Jan 2018



Now that you have your dummy load assembled you can make some tests.

Note that one terminal is marked L(dummy load or antenna) and the other is marked T(transmitter).

There is a reason for this: if they are reversed the indicated SWR may be greater than it really is.

PRELIMINARY

Testing starts with a couple of watts into the **T** terminal with the dummy load connected to the **L** terminal.

One meter will indicate and the other will show little or nothing. Adjust the indicating meter trimmer for max scale. Reverse the **T** & **L** terminals and perform the same operation. Now return **T** & **L** to the proper connections. You are now set up to read SWR.

Metering circuits connected to the Fwd and Ref connection can be calibrated to measure SWR.