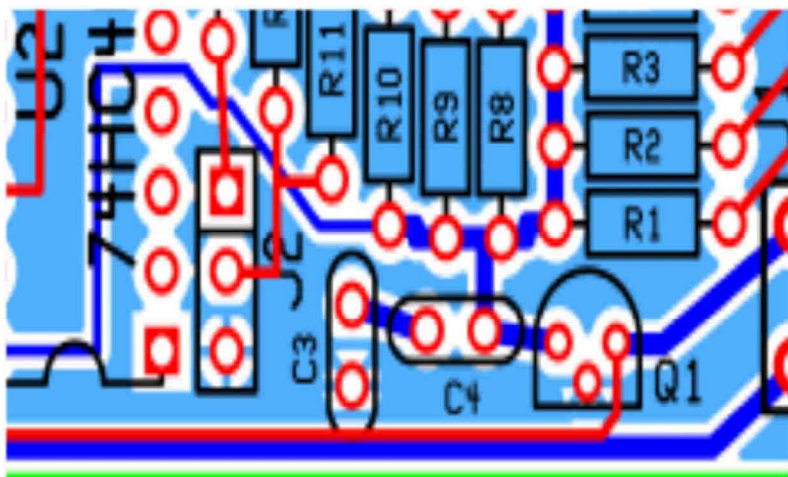


First thing to do is to fix my oops!

RED=TOPSIDE TRACE DARK BLUE=BOTTOMSIDE TRACE
LIGHT BLUE=BOTTOMSIDE GROUND PLANE



The junction of caps C3 and C4 is supposed to be grounded. I left it 'hanging' so it needs to be shorted to ground. After installing the two caps, scrape off a little solder mask near either pad and flow some solder across the gap. Or you can bend one of the cap leads over to the cleared area and solder it to the ground plane.

The 'other' end of cap C3 has grounding 'rays' shorting it to the ground plane when it is actually supposed to be connected to the 9 volt battery lead on the top side of the board just below it. You need to remove the shorting rays on the bottom side of the pad. When installing the cap, scrape off a little solder mask from the battery trace near the pad and bend the cap lead over to the trace instead of thru the hole. Solder the cap lead to the battery trace and clip off the excess.



I twisted a 9/64" drill bit in my fingers to remove the rays and then followed it with a 7/64" bit to remove the rays and pad on the bottom side. Then scraped a little solder mask off with my Xacto. I then scraped a little solder mask off the nearby switched 9 volt trace on the top side.



The finished MOD with C3 in place and soldered to the switched 9 volt trace on top and the pads and ground plane on the bottom side.

Co:	QRPme		
Title:	Pocket Pal..... STEP #1		
Board:	Pocket Pal	Revision:	A
Author:	W1REX Rex Harper	Size:	A
Date:	December 25, 2009	Sheet	1 of 1